

Meeting Point

Volume 32, Number 8, May 2008

The community magazine for the villages of Olveston, Tockington, Old Down, Lower Hazel, Awkley, Ingst, Aust, Elberton and Littleton upon Severn

EDITOR:

Sue Hunter

Hazeldown,
Hazel Lane
Old Down
Tockington
Bristol BS32 4PL
Tel: 01454 412191

meetingpointeditor@gmail.com

ASSISTANT EDITOR:

Carol Norman-Vincenot

The Stocks
Main Road
Aust
Bristol BS35 4AX
Tel: 01454 631814

meetingpointmagazine@gmail.com

ADVERTISING:

Nigel Dawes

Cromwell House
The Street,
Olveston
Bristol BS35 4DR
Tel: 01454 201558

Publication date

1st of each month

**Material for June 2008 to
Editor or Deputy Editor by
8th May**

From the Editor

One of the important functions of this magazine is to publicise local events so I was surprised to read, in a Church leaflet, of Dr David Shaw's organ recital on April 17th, too late for inclusion in the April issue. I subsequently found out that the publicity officer for ACT (Arts & Community in Thornbury) had sent the information to the previous editor via a defunct email address. I mention this so that, if anyone wants to check that publicity information has arrived, they should follow it up with a phone call if they haven't already received a reply from me.

Many of you will know Kate Baldwin from her picture in the Gazette on the News from the Communities page, covering Olveston and Tockington. Kate has emailed to say that she is unable to look after this column any more and would be delighted to hear from someone who would like to take it on. There is no absolute commitment to produce copy every week and the writer can even claim 11p per printed line! Kate is contactable on 01454 612254 or email ktb@ftg.co.uk.

There is plenty of opportunity to get out and about in May with, for example, Thornbury Arts Festival, the Art Club exhibition at Wyevale and the Art Trail some of which is on our doorstep.

Our cover is by Peter Floyd.

Meeting Point Founded in 1976 by the Anglican and Methodist churches in Olveston, near Bristol

Makeover at the butcher's!

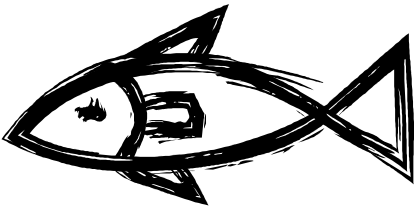
Pat Thirkettle

I'm sure you've all noticed the new signage outside the butcher's shop. It now sports its real name "Powells of Olveston" since Scott Edmonds and his partner Julia Kittow bought the business just over a year ago. They retained the Powell name because the family has been butchers in the area for three generations, and then completed it with Olveston in order to put the village on the map and give it a more contemporary feel.

Scott and Julia have lived in Olveston for eight years and it was always their intention to have their own business. Scott has a background in Business Management in a commercial environment and Julia was an independent financial adviser. They moved here initially because Olveston is well placed for the motorway network, but now they are able to work on their own doorstep. Julia has horses on the Common, and their children Cole and Alexandra attend Olveston Pre-School.

The business they have created is the only butcher and fish monger combined in South Gloucestershire. All meat products are ethically and morally reared and, should you wish, it is possible to trace individual pieces of meat back to source. None of the animals are given any growth hormones or antibiotics during the rearing process. Their lamb is reared locally in Frampton-on-Severn and is marshland fed. Pork comes from Nailsworth and Stroud and is slaughtered in Stonehouse. Beef is Somerset reared and killed, although they still provide Aberdeen Angus topside. Their chickens are from Newent, Gloucestershire and you can choose between barn reared or free range birds. Bacon comes from the renowned Sandridge Farm in Wiltshire.

The fish is delivered overnight, Monday to Friday and ninety per cent comes from Brixham, Looe and Newlyn fish markets, as line caught fish from day boats. This ensures the fish is caught from sustainable sources only, and the small adolescent fish are avoided. You must visit yourself to see the range, but it includes mackerel, Looe Bay lemon sole and hand picked Fowey mussels attractively displayed.



They are now advertising in Thornbury, Bradley Stoke, Almondsbury and Olveston and hope that their customers will support all the village has to offer, the bakery, Olveston Stores and the White Hart. Opening hours are Tuesday – Friday, 8 – 5.30 and Saturday, 8- 1pm. Please telephone them on 613003, when the staff will be pleased to help.

Alternatively you can always visit www.powellsofolveston.co.uk.



St Mary's, Olveston

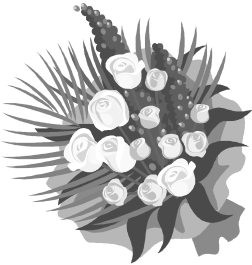
St Mary's Church Summer Fete 2008

We are delighted to announce that this **Summer's church fete** will be held again at Church Farm, Olveston on **Saturday 21st June at 2.00pm** (by kind permission of Mr John Cryer) and in St Mary's Church. We hope for another sunny day with lots of action-packed entertainment and attractions to suit all ages and tastes.

There will be a whole host of traditional stalls, events and entertainments in the grounds of Church Farm, just 1 minute walk down the hill from the church.

We are also looking for people with new ideas who would like to become involved with this fun event and also, of course, those who would like to continue to help with the traditional stalls and activities.

Please contact Sian Slade 419162 or Pauline Wright 616312. We need to hear from you urgently.



Flower Festival at St John's Elberton

Peggy Oakhill

We are having a Flower Festival in St John's Church on the **28th and 29th June**. We have not held one for several years and so we decided that this is the year for another one.

Also on Saturday 28th June at 7.30pm St Peter's Special Choir will be giving a concert "Around the World in 80 Minutes". On Sunday 29th at 6.30pm there will be a Songs of Praise led by St Helen's Music Group with Rev Dave Pole.

We look forward to having lots of visitors at our Festival weekend, and hope to see many of you there.

The REAL reopening of Haw Lane

The estimated date for re-opening of Haw Lane was Friday 11th April 2008, but actually the road was open on Monday 7th April – no doubt to the sorrow of Haw Lane residents and the relief of those living in Vicarage Lane! . Noel Phillips, Group Manager, Highways Design, Structures and Contracts emailed to say that progress on the masonry walling was unfortunately hampered by poor weather during March. Apologies to Councillor Matthew Riddle who was bemused to discover that some readers were taken in by the spoofs in the April edition. *Ed*

Bristol

*Celebration of 100 years of aviation
in this area*

Les Harper

Sir George White registered two company names: "British and Colonial Aeroplane Company" and "Bristol Aeroplane Company" at Filton in February 1910 and on 30th July of that year a *Bristol Boxkite* aircraft, built at Filton, made its maiden flight at the company's flying school at Larkhill in Wiltshire.

BAC, as the company became generally known, spawned Bristol Aero Engines Ltd, Bristol Aircraft Ltd, British Aircraft Corporation, Bristol-Siddeley Engines Ltd, British Aerospace (Filton), Bristol Engine Division of Rolls-Royce, BAE Systems, and Airbus, among many other ventures. These companies have provided employment for many residents of the Olveston area over much of the past hundred years.

Olveston Parish Historical Society is going to celebrate this local connection, to accompany the programme of larger events which are being planned for the Bristol area by a consortium of organisations under the banner *BAC 100*. We have a number of activities planned including :-

A trail guide of the wartime dispersal sites in the locality.

A booklet on some of the notable senior BAC people who lived in our area.

An exhibition of photographs and memorabilia relating to people's work at BAC and the successor companies and, most importantly, an oral history of people's memories of their working lives, or stories passed down by their relatives.

Although 2010 may seem some way off, it's going to take time to collect information and pull the whole project together, so we need to start soon.

We would like to invite anyone with a story to tell, and / or photos or other memorabilia to show, to contact Eric Garrett (613019, evg@ic24.net)

or Les Harper (612304, lesnjanet@hawlane.freeserve.co.uk)

Aust Pilgrimage Walk

David Bone

on **Saturday 24 May 2008**

From the heart of the city ... to the banks of the Severn ... in the footsteps of St Augustine. Start at Bristol Cathedral at 6.50am or join at various points en route. Wear boots or stout walking shoes; it's fifteen miles if you do the whole walk. Bring a picnic. Prayer stations on the way. Join us at the Boar's Head pub, Aust at 3pm (even if you haven't walked at all!). Service in the Ancient Chapelry of St John the Evangelist, at Aust at 4pm. Further info: Canon Paul Denyer: 0117 967 3965 / Paul@denyer03.freeserve.co.uk

To be a pilgrim ...walk the walk, & talk the talk!

Directory Corrections

Oveston Parish Council

The list of councillors was not updated. The current members are as below :

Chairman – June Lyons	632239
Vice Chairman – Irene Reid	613461
Alan Cogram	614821
Tony Heming	614906
Val Hudspeth	614984
John Spratt	619962
Jane Turley-Green	201640
John Hughes	613754
Andy Clarke	613804
Clerk to the Council: Valerie Tutin	613730

Oveston and District Bridge Club

Phil Roos is not the organiser of this club which is run on commercial lines. The organizer continues to be Ralph Smith on 01275 840006. Details can be found at www.excelbridge.co.uk

Thornbury FM



We are back on air from Monday 28th April through to Sunday 25th May, broadcasting on 87.7FM. We want to publicise local events, so please send details of any activities taking place during this period to info@thornburyfm.org or, during the broadcast period, phone the studio on 01454 412001. The full programme schedule and details of how to get involved are on the website www.thornburyfm.org or contact the studio.

WI Report

Anne Boulton

Vice President Joyce Davies thanked everyone who had helped in any way with the recent production of My Fair Lady and reminded members that the Parish Players evolved from our WI drama group. Christmas Box co-ordinator Rita Garlick had received a letter of thanks from the organisers who said that 1.3 million boxes had been donated last Christmas. Rita plans a group four-mile walk as an independent fund-raising project.

Continued on next page

Disaster strikes even the best gardeners. Speaker Sue Aitken brought along a sickly-looking rhododendron attacked by the vine weevil as an example. She advocates chemical treatment when necessary or natural remedies such as garlic spray. The best policy is to keep ahead of the pests - greenfly are already about and the lily beetle is spreading!

Join us on the 13th May when Mr Merritt Smith will talk on London shows and Ivor Novello.

Oveston School News

Touchwood carving workshops for a new Oveston School fence



Last week, Nick from Touchwood worked with the children over two days to create our entrance and exit signs for our new school fence. The children had worked on designs for our signs and Nick incorporated these lovely ideas into the carving project. The children learnt how to use mallets and chisels to carve and sculpt the wood. The school fence will also incorporate two notice boards to display events for both the church and school.

Due to the training involved in using these tools, only a few children from each class had a chance to experience this, but don't worry! Touchwood will be returning in term 5 to continue this project and much more work will be needed with children in each class! The next phase of the project is to build a cob shelter made from mud and straw. The shelter will also have a planted sedum roof. The children are looking forward to getting their hands dirty to make the cob element of the shelter!

Egypt versus the S. S. Great Britain

Luke and Abi

On Tuesday 4th March we went to the museum and the S.S. Great Britain. At first we were on the coach. When we got to the museum, it looked really big. We went upstairs and had to open boxes which had Egyptian stuff in it and we had to say which type of person would have had it. We went and saw the tombs in the Egypt museum then we went to the animal section. I think the best part of the animal section was the tigers and eagles. Then we went upstairs and saw the dinosaur bones. We also saw lots of diamonds and crystals.

Next we had to say goodbye to the museum and go to the S.S. Great Britain. We got a day ticket. First we went under the S.S. Great Britain. Inside the ship, we had to try and find a ginger cat called Sinbad but it was a toy. We found him on a bed and we found a black cat in the kitchen. On the day ticket that we had, you had to collect stamps around the ship. I (Luke) pulled the bell and tried on some hats. We then went up to the top deck and I steered the wheel. We then got back on the coach and went back to school. I (Abi) had a great day.

Garden of Sunnyside Cottage, Littleton

Pat Thirkettle

Harold and Hesta Knapp bought Sunnyside Cottage in 1964 and have spent the last forty years on a labour of love creating their garden.

It was originally a farm worker's cottage, which they extended and next to it was an old coach house from which Hesta ran Littleton Post Office for many years, until it closed in 1994. Initially they were obliged to create the garden next the house from an old cow yard, replete with bricks and stones. They imported loads of topsoil and for the first few years used it to grow vegetables. However as their family grew they needed more space, so they bought half an acre of the field behind the garden, and put the original garden down to lawn for the children's play. The vegetables were then grown on the newly acquired field, where they still are today, only now they are surrounded by a well-kept and well-stocked garden. A few years later they bought more field with the intention of building a tennis court, which didn't materialise, but extended the garden to about an acre.

The first tree they planted was a *Cedrus atlantica glauca*, which now dominates the garden and is under-planted with *Cyclamen coum* and hellebores. There are several magnolias of different types and a variety of apple trees that include Laxton Fortune, Blenheim Orange, Jupiter (a good keeper), Egremont Russet, Grenadier and Bramleys. The pears they grow are William and Comice, the plum is Marjorie's Seedling, the damson is Merryweather and on a sunny wall there is also a peach which fruits. The vegetable plot had recently been dug over and it was clear to see their soil is clay, which is slow to dry out, but fertile. They grow all the usual vegetables and are self-sufficient.

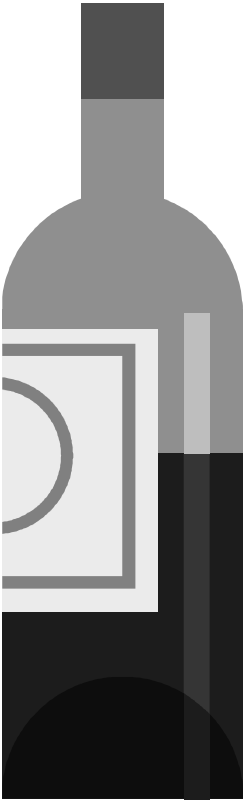
Hesta gives Cecily Turton, (a local friend and great gardener), the credit for starting her off all those years ago when she advised on shrubs and trees, many of which are still there. However it is obvious that Hesta's first love is flowers. There are many flowerbeds interspersed with grass paths, in which she grows much prized herbaceous plants, too numerous to mention. Hesta makes sure there are flowers all the year round, from the catkins of *Garrya elliptica* in January, through the spring display of snowdrops, daffodils, primroses and hyacinths, to all the promise of colour and scent to come in the summer and autumn.

There are about sixty old fashioned, scented roses, between thirty and forty varieties of clematis and several wisterias that are clearly much loved old friends. The Knapps open for Littleton Open Gardens every other year. One year they were asked to open for The National Gardens Scheme, with two other local gardens. They much enjoyed showing two hundred people round but it did involve a lot more work, as the required standard is very high. The Village Hall also opened for teas and made some money for the village.

If, after reading this, you would like to see Hesta and Harold's garden, put a note in your diary that Sunnyside Cottage, opposite the Evangelical Church in Littleton, will be open from 1pm to 5pm on June 8th 2008.

Twinning Association: Wine Tasting Evening

Jackie Cavanagh



On an evening out with pals, have you ever played that game where you taste the wine and try to guess the Jilly Goulden style description on the back of the bottle? If you have then you'll have a good mental image of the level of conversation and camaraderie that ran through this wonderful evening.

There were 10 tables of 12 people each and 10 bottles of unmarked but numbered wines per table, 4 white and 6 red. Each person had a glass that was marked a third of the way up the glass to ensure that 12 people had an equal share. Each person was then issued with the aforementioned wine description, alcohol content, grape and country of origin. Tasters were invited to match each numbered wine to the printed descriptions. Martin Leathwood chose the wines, but the overall planning of the event was down to John Clayton, to whom several of us raised a glass or two or three.

The evening was very ably compèred and marshalled by Ian Macdonald. Ian ensured that we drank up (or threw away) wines promptly so that we weren't home too late for bed! At half time there was an impressive raffle which, due to the efforts of Jayne Moffett, the Twinning Committee and others proved to be a super "half time " event.

If the hall were twice the size it is, I am sure that Emma Neal could have sold twice the number of tickets, as the event was a very quick sell-out. That however should not underestimate her efforts or professionalism as chief vendor.

No wine tasting evening would be complete without the traditional cheese and bread that was all sourced locally and plentifully by Celia Copley.

The final touch that rounded off what was an excellent evening was the choice of decoration for the hall in the French Tricolour of blue, white and red, together with a rolling projection of photos of familiar faces.

No-one guessed all 10 wines correctly but there was someone who guessed 6 correctly. And that clever person was.....well, we are going to keep that our secret! But if you want to know anything about this or any of the other Twinning Association activities, then please call Jan Winter on 01454 613846. Cheers!



St Mary's Church Walking Group

Steam Train to Dartmouth

A special trip is planned on September 21st by steam train to Dartmouth. We meet at Temple Meads and, on arriving at Kingswear, travel by ship to Dartmouth. We then look around the town and visit a pub for lunch. I would strongly recommend the day out! The scenery, especially along the coast from Exeter, is spectacular.

Unfortunately, the cost is £55 but this does include the ship cruise. £25 deposit by **4th May, closing date.**

Dan Evans, Leader Church Walking Group – phone 615313

Mayor's Grand Charity Show

The Show is to be performed in the Armstrong Hall on **Saturday 3 May 2008.**

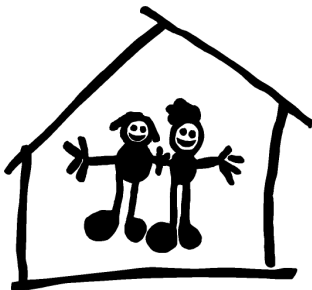
Tickets are now available from the Town Hall priced £10 for raised seating/£9 on the flat, with concessions of £9 raised seating/£8 flat.

Don't Miss the Thornbury Arts Festival

Thornbury Arts Festival from 9th to 18th May has great jazz with Humphrey Lyttelton and his band (unfortunately already sold out, *ed*), brilliant piano duettists Nettle & Markham in concert, authentic tango dance and music with Tango Nuevo & Tango Siempre, first rate drama in Cider with Rosie by the Bristol Old Vic Theatre School, hilarious reminiscences by Brian Rix, in addition to expert academic insight into Tutankhamun by Dr Joyce Tyldesley, and excellent performances by Thornbury Choral Society and the zany home-grown comedian Greg McLaren.

Don't miss these great performances or the fascinating lunch time talks, free public events and concerts, family science show by Explore at Bristol, or the mesmerising South Asian music and storytelling for families by Regata.

Pick up a brochure for full information on these first-class local events from the Town Hall, Thornbury High Street, phone 01454 412272 for information, or visit the website: www.thornburyartsfestival.com.



Olveston Pre-School

Olveston Pre-School

Nearly New Sale

The date is **Saturday 17th May**

The place is **Olveston Parish Hall, Tockington, 10am-12, 50p entry (Children 20p)**

Good quality baby and children's clothes, toys, books, games and baby equipment.

For further information and seller's instructions contact Lucy Shrimpton on 01454 626156 or email lucyshrimpton@tiscali.co.uk

Our next event is an **Open Morning on Wednesday 11th June 9.30-11.30**

For more details contact Helen Moorefield on 07786395414



ARTS & COMMUNITY IN THORNBURY

Poetry, Pasties and Pints

As part of its continuing season of fundraising events, ACT (Arts and Community in Thornbury) is delighted to welcome two distinguished Gloucestershire poets to Thornbury.

Brenda Read-Brown and **Peter Wyton** (Gloucestershire Poet Laureate), who both appeared at the Cheltenham Literary Festival last year, will present an evening called ***Floods and Forward*** at Christ The King Church Hall in Castle Street on **Saturday, 24 May at 7.30 pm**. In the first part of the evening, they will recall in poetry the floods which affected so much of Gloucestershire in 2007 – the sense of sadness and loss but also the courage and warm community spirit. After the interval, during which the pints and pasties make an appearance, Barbara and Peter invite you to enjoy the lively experience of the fun and frivolity of performance poetry.

Tickets (£8/£7 for FACTS) will be on sale from April 21 from The Garden Shop in Thornbury or by ringing Jackie Jackson on 01454 416421. Please note that pasties are included in the price but not the pints!



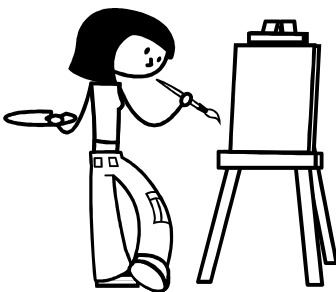
Severn Vale Open Art Studios Trail

Jane Parfitt

The popular Severn Vale Open Art Studios Trail is to be held between the 3rd and 17th of May this year. The trail extends from Almondsbury to Berkeley on either side of the A38. It will be preceded by a "Showcase Exhibition" in Thornbury Town Hall, High Street, Thornbury, offering examples of the Artists' work.

If you are looking for a painting, a piece of sculpture or other works of Art such as batik, textiles, basket weaving, pottery, stained glass and jewellery, watch out for the colour brochure to be widely distributed. Copies will also be available from Thornbury Town Hall. These show an example of each Artist's work, venue address and times of opening. From this you may organise your own trail to make an entertaining and enlightening excursion. A clear map and signs show the location of each venue. All work is of high quality and Artists are on hand to explain how they go about their work. It is certainly fascinating to discover the talent and variety of Arts and Crafts on our own doorstep.

If you have already visited the Severn Vale Open Art Studios in previous years you will know what a pleasant experience it is. Please tell your friends! So do remember that in May you have a treat in store when you can savour a variety of Arts and Crafts produced by our local Artists, some of whom have exhibited at the RWA, all of whom show great talent and expertise.



Serendipity 3

The spring exhibition of **Thornbury Art Club** is being held at the Wyevale Garden Centre for the third year running. The venue is spacious and well lit, making it ideal for displaying the large number of colourful paintings, most of which will be for sale. Also on show will be the paintings by members of the Thornbury and District Stroke Support group.

Essential Information

The exhibition runs from **Fri 9th May to Wed 14th May**.

Opening hours are the same as the garden centre:

Mon to Fri 9am - 6pm and Sun 10am - 4pm.

Our indoor gallery is situated in the main building. After entering by the main door, turn right and follow the signs.

Continued on next page

Entrance is free as is the large car park. That restorative cup of tea or coffee can be purchased at the garden centre's restaurant just a few steps from the gallery. The raffle this year is in aid of the Breast Cancer Unit Support Trust based at Frenchay hospital.

Wyevale Garden Centre is at Milbury Heath on the A38 near Thornbury.

Best Kept Village

So it's the time of year again when we can all make an extra effort for our village to be the best in the Avonside area in the annual competition sponsored by Calor Gas.

We who are privileged to live in the lovely village of Olveston hope the judges think so as well when they visit during May / June looking for a 'well maintained tidy village with a well balanced, pro-active and caring community'.

The co-ordinator this year is Geoff Chappell. If you feel you would like to contribute in any way to help us win for a third time, please contact him on 615806.

Parish Hall

The red brick building on the Olveston / Tockington Road next to the tennis courts is our Parish Hall which, as you may know, is slightly run down and in need of a little TLC.

This cannot be achieved without help and enthusiasm. We need to become more proactive and the Management Committee is seeking further members to take on the challenge to transform this building into a Parish Hall to be proud of in the 21st century.

I have been involved with other projects within the Parish in the past and always had your support. I look forward to new ideas and help in the future to improve the existing facilities for the benefit of all.

Please contact Geoff Chappell, Chair of Olveston Parish Hall Management Committee. Tel: 01454 615806

A Date for your Diary

SATURDAY June 28th 2008 at 7.30 p.m. City of Bristol Brass Band **AND** Fascinating Rhythm at a garden in Aust. Bring your chairs, your picnics and lots of friends. There will be a bar selling Wine and Beer, Tea, Coffee and soft drinks. Tickets £5 – children under 16 free.

See next month's issue for greater details and how to obtain your tickets

Music in the Church at Aust

Misericordia: Passion, Pilgrimage and Plague

The fourteenth century was a time of plague, war and famine. The old certainties of the feudal order began to crumble. After the Black Death destroyed a third of the population, the world would never be the same again. In the grip of social upheaval, fourteenth-century Europe produced some true oddities: processions of German Flagellants; a French king who thought he was made of glass; a hysterical dancing mania; a war between two popes . . . surely, this was the end of the world, the Judgement Day.

But this was also a time of increasing musical freedom, inventiveness and complexity. This emergent musical style was dubbed *Ars Nova*, 'The New Art', by Philippe de Vitry in 1329.

Joined by singer Helen Barber and percussionist Terry Mann, Misericordia resurrect the manic dance music of Northern Italy, popular pilgrimage music from Spain, and the intensely passionate and polyphonic love songs of England and France, using medieval instruments such as hurdy-gurdy, bagpipes, gothic harp, citole, recorders and voices in consort.

Misericordia will be at Aust church on **Saturday 17th May at 8pm**. Tickets are £10 full and £8 concessions, available from Peter or Gina Dobbins on 01454 632306 or directly from the Boar's Head, Aust, or Olveston Stores.

Webb Ivory

*Lynda Spratt, Scout Leader
1st Olveston Scouts*



A big Thank You to Audrey Knapp for raising a fantastic £420 from sales of greeting cards and Christmas goodies over the Christmas period. The funds will be used to replenish some ageing kit for 1st Olveston Scout Group.

My mother, Mrs Knapp, has been raising money for local charities (whichever ones her children have been involved in) since before 1982 and has raised a remarkable £22k+ in this time.

Thank you Mum!

Olveston and Tockington Methodist Church

Saturday 10 May: Tockington Chapel will be open for coffee from 10.30 - 12.30. There will be a small exhibition on Christian Aid to mark the start of Christian Aid Week.

Sunday 11 May at 6pm: Local churches are joining together for a Christian Aid Songs of Praise for Pentecost, on Tockington Green. Everyone is welcome to join in - please bring folding chairs/rugs to sit on. In the Chapel if wet.

Saturday 17 May: Christian Aid Coffee morning in Tockington Chapel from 9.30 -12 noon. Coffee and usual stalls.

Advance notice

Saturday 14 June at 7pm: Tongan evening in Olveston School Hall - supper, singing and dancing. Further details will follow.

Police Report

Hello, here is the police report for the month of March.

The Safer Stronger Community Group priorities for the police remain as speeding/inappropriate vehicles on the B4461 Elberton and Rockhampton roads. Speeding enforcement has been carried out in both locations at varying times, especially rush hour. On those occasions, no vehicles were driving over the speed limit.

March saw a total of 40 calls to the police, 15 fewer than last month, and 10 reported crimes, 3 of which were domestic incidents.

3 males in a white van with distinctive green stripes stole batteries and other equipment from a yard in Hardy Lane, Tockington. These males had been to the site on numerous occasions that morning. There was criminal damage to a rear window of a property in Oldbury Naite. A burglary occurred at Olddown House; offenders gained access to a garage and stable block taking a grandfather clock, gas meter and an infra-red heater.

There was an attempted theft of a tractor from a field, Main Road, Aust; the male abandoned the tractor 2 fields away and rode off on a push bike. This tractor was targeted approximately 3 weeks ago. An offender gained entry to an insecure vehicle outside Thornbury Sailing Club, where s/he stole a handbag. A stolen vehicle from Gloucestershire was found in Moor Lane, Tockington, completely burnt out, and another stolen vehicle from the same area was found abandoned in Laxton Close, Olveston.

A suspicious van was seen in the grounds of Tockington Manor School. When confronted by staff, it was driven off at speed; the male driver had an Irish accent.

Suspicious males in the evening were seen with dogs and torches along Ingst Road, believed to be rabbit hunting. Theft of ornaments occurred from a garden in Tockington and theft of property from an insecure garage in Aust. A property in Olveston had eggs thrown at the upstairs window. Local youths were believed to be responsible and all parties spoken to.

The next beat surgeries at Olveston Stores are on **8th May** and **12th June**.

Emergency Contact Number: 999

To report crime or for non-emergency incidents: **0845 456 7000**

Local community issues contact:

PC Roger Hopes or PCSO Kelly Dimery on 0117 945 5959

Thornbury Library News

Healthy living during the month of May!

With the kind help of numerous local support groups we have a packed programme of events throughout May to tie in with the *National Year of Reading*, which you will be hearing about in the national press. To celebrate the link between reading and health come along to Thornbury Library on Wednesdays and Saturdays when you can do more than read about it you can actually do it, from playing table tennis to Salsacise dancing with a Tai Chi session and a massage in between! The programme is:

Saturday 3 May (10.30am onwards) Thornbury table tennis club, Complementary medicine.

Wednesday 7 May (10.00am onwards) Fibromyalgia syndrome support group, Age Concern, Hard of Hearing support group, Carers support group

Saturday 10 May (11.00am) Tai Chi.

Monday 12 May (2.00pm-3.00pm) Meningitis research foundation,

Wednesday 14 May (10.00am onwards) Bosom buddies, Stroke support group, Diabetes support group.

Saturday 17 May (10.00am onwards) Lloyds chemist (blood pressure testing etc), In good hands-massage, Nutritional therapist.

Wednesday 21 May (10.00am onwards) Can South Gloucestershire Council keep you fit?

Drop in for lots of ideas - you can even go on a guided walk, starting and finishing at the library.

Saturday 24 May (11.00am) Salsacise (Sammy Hutchinson)
Refreshments at events kindly supplied by Thornbury Fairtrade.

Please note times and events may vary. Please contact the library for details on 01454 868006

Echoes from the Front Line: A collection of Local People's WW2 Memories
edited by Jackie Ashman
Available now from Thornbury Library price £5.95

This is the long awaited sequel to *Echoes from the Home Front*, published in July 2006 by South Gloucestershire Council Museums & Heritage. This latest book covers the military stories of local people wherever they found themselves during WW2.

These stories were all individually researched by Jackie and supported by original photographs.

Copies are also available at Thornbury Museum, Thornbury Bookshop and other South Gloucestershire Libraries.

Silver Surfers' Day- Friday 23 May 10.00-12.00 noon

Want to know the basics of using a computer but afraid to ask?

Come along to one of our informal Silver Surfer Sessions for some friendly one to one help.

Please note these sessions are for beginners only. Please call in to the library to book a place or ring 01454 868006.

For more information on any of the above items please give the library a ring on our new number 01454 868 006 (24 hour renewal line 08450 020 777) or visit our web-site on www.southglos.gov.uk/libraries.

St Mary's Church Walking Group

URGENT - Visit to Prince Charles' Highgrove House on May 16th

Our Church Walking Group has specially been invited to visit Highgrove House, to arrive by 10.30 a.m.

If you wish to come, I need your full name, phone number and postcode; a subsequent visit is not allowed. This is a very serious invitation; passports/driving licences and two utility bills are required to be shown. There will not be a closing date; names will be listed on a 'first come, first served basis'.

Please make immediate contact if you wish to come, either by phone on 01454 625313 or email: woodenhouse@talktalk.net.

Dan Evans

Leader St Mary's Church Walking Group.



Encounters with John Wesley

David Wilkins

During the summer of 2007, you may have noticed some strange goings-on in and around Littleton on Severn! Be-costumed people wearing tricorne hats were to be seen riding round the vicinity! Others were walking around fields and singing hymns! The explanation was that they were all “starring” in a film about the life of John Wesley, the founder of Methodism. Filming was carried out by the Bristol

Film and Video Society (BFVS). This organisation, founded in the 1930s, consists of enthusiastic amateur film and video makers, but also includes some current and former professionals.

The starting point for the project was an approach to the society by Mark Topping, an actor who tours with a one-man show, portraying an evening with John Wesley. People who had seen and enjoyed the show were asking for a memento to take home. The DVD that has resulted from the collaboration between Mark and the BFVS is much more than just a video of the stage show. Its 89 minutes comprises several sections: a dramatised documentary portraying some of the remarkable events in the great preacher’s life; 4 sermons “preached” by Mark Topping as John Wesley, including a famous anti-slavery one; an interview with Mark about Wesley the historical figure and his portrayal of him; finally a short “trailer” about the New Room in Broadmead (the world’s first Methodist Chapel) and Charles Wesley’s house in nearby Charles Street, both locations used in the filming.

The dramatised section required the help of numerous extras to help portray the people in Wesley’s life, crowds to whom he preached, as well as riots he sometimes encountered! We were most grateful for volunteers from Thornbury, the surrounding villages, and local churches, who put up with all the standing around which tends to occur on such occasions. Now the film has been completed and there is a chance for everyone to see how it turned out. There will be a showing on **Friday 9th May at 7.30 pm in Littleton on Severn village hall**. Do join us there to see it, enjoy a glass of wine and meet Mark Topping! The DVD will also be on sale for a special price of £4 (normal £10). If possible a phone call in advance to 01454 412233 would be appreciated, to give us an idea of numbers expected.

Incidentally, if you are an interested videographer, and fancy getting involved in such an enterprise, why not come along to a BFVS meeting and meet some like-minded individuals. We meet the first and third Tuesday of each month at the Filton Parish Pavilion, Elm Park, Filton, 7.30 – 10.00 pm. For further details, visit our website www.bristolvideo.org.uk



Cricket Club News

150 Club Winners April:

£50 Bill Finch
£15 Charlie Jarvis
£5 Alan Maunder

Latest £25 Bonus Ball Winners:

1st March Barbara Binns
8th March Greg Welsher
5th April Paddy Gardner

The Club is holding a Race Night on Friday 6th June to raise funds for improvements which have been made to the nets area of the ground. This should benefit all players, but should especially

help with the development of our Colts players. Races can be sponsored for £60 & you can be a horse owner for £5, so please contact me if you would like to help in this way. Even if not, please come along & enter into a most enjoyable evening.

The Season is about to commence & the early fixtures are listed below.

The Club always welcomes new Players & with Two League Teams on a Saturday, a full Sunday Fixture List & Colts Teams competing at Under 17, Under 15 & Under 13, there is something for everyone, so 'Come & Join Us!!'

May Fixtures at The Park:

Thurs 1st May	U15s v Frampton Cotterell (6.00pm)
Sat 3rd May	2nd XI v Chipping Sodbury (2.00pm)
Sun 4th May	U17s v Rockhampton (10.30am)
Thurs 8th May	U13s v Almondsbury (6.00pm)
Sat 10th May	1st XI v Hanham (2.00pm)
Tue 13th May	U13s v Thornbury Blue (6.00pm)
Sat 17th May	1st XI v St Mary Redcliffe (2.00pm)
Sun 18th May	Sunday XI v Chipping Sodbury (2.30pm)
Mon 19th May	U13s v Rockhampton (6.00pm)
Tue 20th May	U15s v Thornbury Red (6.00pm)
Sat 24th May	2nd XI v Knowle (2.00pm)
Sat 31st May	1st XI v Portishead (2.00pm)

Spectators are always welcome at all matches, so we look forward to seeing you!!
Tony Gardner 07889 727729 www.olddowncricketclub.co.uk



Weather - March 2008

Marcus Bean

ITEM	DATE RECORDED	ACTUAL READINGS 2008	ACTUAL READINGS 2007	LONG TERM AVERAGE
Max Temp °C	31 st	14.3	17.1	18.0
Min Temp °C	5 th	Minus 1.6	Minus 1.2	Minus 1.3
Average Temp °C	—	7.52	8.31	8.10
Max Press. mbars	5 th	1033	1036	1033
Min Press. mbars	10 th	956	991	990
Average Press mbars	—	1004.4	1015.4	1014.3
Max Wind speed mph	10 th	57	49	46
Days with Gales	1 st , 10, 11, 12, 13, 21, 22, 23, 29, & 30 th	10	5	3
Max Day Rainfall mm	16 th	18.39	15.96	14.14
Rainfall in Month mm	—	82.53	52.03	51.82

Typically capricious weather of high winds, rain and hail driven on by a strong jet stream characterised the first nine days of March. On the 10th the jet stream intensified, which combined with an Atlantic low pressure system, produced an area of intense low pressure which passed over the South of the Country bringing severe gale conditions and heavy rain. This persisted for two further days and then eased to a more normal procession of Atlantic lows with their associated fronts until the 20th. Following this a low pressure system became static over Denmark and high pressure built near Iceland, bringing very strong and cold Arctic winds over the Country with snow in many areas for the Easter holiday. These conditions abated on the 25th when Atlantic conditions of wind and rain again prevailed until the end of the month. March is traditionally a fickle and changeable month and this was no exception.

Rainfall for the month was over an inch above average and with the succession of low pressure systems, the average pressure was below norm and correspondingly the average temperature was significantly lower than normal. We had one air frost and eighteen ground frosts in the month. The low pressure noted on the 10th was the lowest that I personally have ever recorded.

Yours faithfully

David Bone

“It’s better to wear out than rust out!” So said many of my in-laws and their generation when I first came to know them in South Wales. Judging from the feverish activity in the garden from the birds and the bees, they at least certainly seem to be ‘on message’ on this April Fool’s day, the first really warm spell since February, it seems, though I doubt whether any of our native species can quite emulate the tremendous agility shown in those stupendous shots of Adele penguins flying off on migration. Quite unbelievable!

It is also the time of year when most of us are reviewing our activities for the tax-man, which, depending upon how we respond to the Inland Revenue, may (or may not) indicate quite how busy little bees we have been this past year. Also, perhaps, unbelievable!

Actually, I happen to get an early bird’s eye view of much of our villages’ activity, since the accounts of various sub-committees for at least two of the churches come my way for incorporation into a booklet of reports. For what many might erroneously suppose to be a cluster of sleepy little semi-rural villages, we are a surprisingly active community in all sorts of ways, not least in what is going on in our church life.

What is also clear is that many people are closely involved in all sorts of other community activities. Sometimes it seems to be the same few who are most heavily involved in doing good, in loving our neighbours, but in my new role in life I get to know quite a bit about how many unsung heroes we have in village life, beavering away but not necessarily letting on about it. That’s all to the good. Some of us, the churchy folk, may feel the need for mutual support in this business of loving our neighbour; others (arguably just as much the real saints — though they would as often as not disown that description) may feel strong enough quietly to get on with things on their own. For all of us, I say “keep up the good work(s)”.

From the Registers

Baptism at St Mary’s Olveston on 6th April:

Isabella Grace, daughter of Mark and Sharon Dolman

Church News: ST MARY THE VIRGIN, OLVESTON

May 1st Ascension Day	7.30pm	Holy Communion	Revd Philip Rowe
May 4th	8am	Holy Communion	Revd Philip Rowe
	10am	Holy Communion	Revd Philip Rowe
	10am	Breakfast Club	Breakfast Club Team
	6pm	Evensong - Choir	Revd David Bone
May 11th	8am	Holy Communion (BCP)	Canon David Sansum
	10am	Morning Worship - Choir	Mr Denis Jones
	10am	Breakfast Club	Breakfast Club Team
	6pm	Songs of Praise at Tockington	Revd David Bone
May 18th	8am	Holy Communion	Revd Philip Rowe
	10am	Holy Communion - Choir	Revd Philip Rowe
	10am	Breakfast Club	Breakfast Club Team
	6pm	Evensong	Mrs Janet McBride
May 25th h	8am	Holy Communion (BCP)	Canon David Sansum
	10am	4 th Sunday	Mrs Janet McBride
	10am	Breakfast Club	Breakfast Club Team
	6pm	Evensong (BCP) - Choir	Revd David Bone

Information on services correct at time of going to press.

CONTACT PERSONS: Internet: www.stmarysolveston.org.uk/index.html

The Rev Philip Rowe, (01454 613223); email: office@stmaryssevernside.org

Please contact Philip about Baptisms, marriages, funerals or other matters at any time, but please try to avoid Thursdays except in an emergency.

Mrs. June Robbins, Verger 01454 617491

PRAYER GROUP: Mondays, 3.00pm in the Church (except third Monday)

WEDNESDAY HOLY COMMUNION: At 9.00am led by the Rev. Roly Bain

CHAPELRY OF ST JOHN, AUST

May 4th	8am	Holy Communion	Rev David Bone
May 11th	10am	Holy Communion	Rev David Bone
May 18th	8am	Holy Communion	Rev David Bone
May 25th	10am	Morning Prayer	Rev David Bone

Assistant Curate: Rev David Bone (01454 614601)

Church Wardens: Jo Jenkins (01454) 632838 and Janet Ford

ST MARY DE MALMESBURY, LITTLETON-ON-SEVERN

May 4th	9am	Holy Communion	Rev. David Pole
May 18th	9am	Mattins	Mr Don Streatfield

Contact person: Rev. David Pole (01454 414810); www.sthelensalveston.org

ST JOHN THE EVANGELIST, ELBERTON

May 11th	9am	Mattins	Mr Don Streatfield
May 25th	9am	Holy Communion	Rev. David Pole

Contact person: Rev. David Pole (01454 414810); www.sthelensalveston.org

OLVESTON AND TOCKINGTON METHODIST CHURCH

May 4th	10am	Tockington Ch	Morning Worship led by Rev. Audrey Standhaft. Junior Church in the Wesley Rooms.
	6 pm	Olveston Ch.	Evening Worship led by Rev. Iesinga Vunipola. St. Andrews Methodist Church at Filton will join with us together with a group of Christians from North West Romania who they are supporting. Light refreshments after the Service.
May 11th	10am	Olveston Ch.	All Age Worship led by Miss Rosemary Clews. The Breakfast Club will join us later in the Service.
	6 pm	Tockington Green	United Open Air Songs of Praise led by the Rev. David Bone. Please bring your own chair or rug. (Service in the Chapel if wet).
May 18th	10am	Tockington Ch.	Morning Worship led by Mr. Glyn Varney. Junior Church in the Wesley Rooms.
	6 pm	Daldry Gardens	Evening Worship led by Rev. Iesinga Vunipola.
May 25th	10am	Tockington Ch.	Morning Worship led by Mr. John Trebble. Junior Church in the Wesley Rooms.
	6pm	Olveston Ch.	Evening Worship with Holy Communion led by Rev. Iesinga Vunipola.

LIGHT LUNCHESES: Thursday 1st May at 12.15pm in the Tockington Wesley Rooms
To book your lunch please ring 416056.

NORTHWICK LUNCHEON GROUP: This meets at 12.30pm on Wednesday 28th May. To book your lunch please ring 416528.

PRAYER MEETINGS: Thursdays at 2.15pm in the Olveston Vestry.

COFFEE MORNINGS: Saturdays 10.30am – 12 noon in the Olveston Methodist Hall except on the 10th and 17th May when a Christian Aid Coffee Morning will be held in Tockington Chapel.

DISCUSSION GROUP: A Discussion Group covering topical subjects is held on the 4th Tuesday of every month. Meetings commence with coffee 10.30am for 11.00am. This months meeting is on the 27th May.

CONTACT PERSON: Rev'd Iesinga Vunipola. 01454 412269; Iesinga@hotmail.com

THE VINE, AWKLEY

The Vine, Pilning Street, Awkley

We meet in a relaxed, informal manner for worship, prayer and conversational Bible studies and incorporating Communion, normally on Sundays at 10.30am and Mondays and Wednesdays at 7.30pm. As we also visit other churches and events, please check Notice Board or contact

Mike and Barbara Matthews, tel. 07840793772 or email thevine_awkley@hotmail.com

THE OASIS CHURCH, OLDOWN

May 4th	6.30pm	Victory Outreach
May 11th	6.30pm	Ceri Morgan - Davies
May 18th	6.30pm	John Moseley
May 25th	6.30pm	Munir Din

For further information please contact Olwen Wonnacott (412141) or Paul Ashford (07774-110814) email: **Paul@CalebGroup.net**

AUST EVANGELICAL CHURCH offers a warm welcome to Family Worship at 11.00am and to Evening Worship at 6.30pm. For more details, please phone 613134 or 632564. 'Happy are the people whose God is the Lord'.

BRISTOL CHRISTIAN FELLOWSHIP IN OLVESTON – well, not so much in Olveston these days as we concentrate on serving the community primarily in other areas of Bristol and Thornbury. As followers of Christ, our heart is to be where the Lord wants us to be most effective and currently we are establishing our presence in North and East Bristol as well as continuing to work with the other local churches in Thornbury and in the heart of Bristol amongst the most needy. Our Sunday morning meetings are held at The Grange School in Warmley at 11 am, but the life of the church continues in a variety of forms, locations and styles throughout the week. Please contact the Fellowship Office in Almondsbury on 01454613305 for more information or on the internet at www.bcfnet.com

RC CHURCH OF CHRIST THE KING, Thornbury - each Sunday
8.30am - Mass 11.00am - Family Mass 6.30pm – Mass

SOCIETY OF FRIENDS (QUAKERS), Thornbury

Meeting for Worship Sundays 10.30am. The Tudor Room, The Chantry, Castle Street

Diary Dates for May 2008

The information given below is believed to be correct as we go to press.

1 st Thu	Olveston Baby and Toddlers -Fleur Tel: 07884 186121 Whist Drive – all welcome	2.30 – 4.30pm 7.30pm	MH DGCL
2 nd Fri	St Mary's Church Choir	7-8pm	
3 rd Sat	Open Art Studios Trail starts (continues to 17 May) Olveston Methodist Hall Coffee Morning	10.30-12 noon	MH
4 th Sun	Thornbury Rambling Club- 1.) Tel: 411305 Long 2.) Tel: 416464 Short	1) 8.30am 2) 9.30am	
6 th Tue	Tockington Toddlers Thornbury Rambling Club- T. 0117 9083778 Royal British Legion -Women	10-12noon 7pm 7.30pm	WR DGCL
8 th Thu	Olveston Baby and Toddlers Thornbury & District Flower Club – Demo. Whist Drive – all welcome Thornbury Rambling Club- Tel: 416389 short	2.30 – 4.30pm 7.30pm 7.30pm 10am	MH TMH DGCL
9 th Fri	Tockington Chapel Open Weekend 9th-11 th May St Mary's Church Choir Thornbury Arts Festival begins (& continues to 18 May) Encounters with John Wesley	7-8pm 7.30pm Littleton V. Hall	
10 th Sat	Tockington Chapel Coffee Morning Aust Village Hall Coffee Morning- all welcome	10.30-1230 10.30-12 noon	AVH
11 th Sun	Thornbury Rambling Club- Long Tel: 414746	8.30am	Aldestrop
13 th Tue	Tockington Toddlers Thornbury Rambling Club- Tel: 415448 Olveston WI	10-12noon 7pm 7.30pm	WR Whale Wharf PH
14 th Wed	Royal British Legion - Men	7.30pm	DGCL
15 th Thu	Olveston Baby and Toddlers Whist Drive – all welcome	2.30 – 4.30pm 7.30pm	MH DGCL
16 th Fri	St Mary's Church Walking Group St Mary's Church Choir	7-8pm	
17 th Sat	Olveston Preschool Nearly New Sale Christian Aid Coffee Morning, Tockington Chapel Music in the Church at Aust - Misericordia	10-12 10.30-12.30 8pm	PH WR AC
20 th Tue	Tockington Toddlers	10-12noon	WR
21 st Wed	Severn Vale Flower Club- K. Lee- 'At Home'	2pm	AH
22 nd Thu	Olveston Baby and Toddlers Thornbury & Dist. Flower Club – Practice Class Whist Drive – all welcome	2.30 – 4.30pm 7.30pm 7.30pm	MH TMH DGCL
23 rd Fri	St Mary's Church Choir End of School Term	7-8pm	

24 th Sat	Olveston Methodist Hall Coffee Morning Aust Pilgrimage Walk ACT: Poetry, Pasties and Pints - RC Church Hall, Castle St, Thornbury	10.30-12 noon 7.30pm	MH
25 th Sun	Thornbury Rambling Club- Long Tel: 885170 Marlwood School Car Boot Sale	8.30am From 9.30am	Downton Cas
27 th Tue	Parish Council Meeting - AGM Tockington Toddlers	7.30pm 10-12noon	AP WR
29 th Thu	Whist Drive – all welcome	7.30pm	DGCL
30 th Fri	St Mary's Church Choir	7-8pm	
31 st Sat	Olveston Methodist Hall Coffee Morning	10.30-12 noon	MH
Looking Ahead to June 2008			
14 th Sat	Parish Hall Barn Dance and Hog Roast		PH
21 st Sat	Church Fete, Olveston	2pm	Church Farm
28 th Sat	City of Bristol Brass Band AND Fascinating Rhythm at a garden in Aust – all welcome !	7.30pm	Venue tba
28 th & 29 th	Elberton Flower Festival		St John's, Elberton

Key: **ACR** – Almondsbury Church Rooms; **AH** – Armstrong Hall, **AMC** – Alveston Methodist Church; **AMH**- Alveston Methodist Hall; **AP** – Alexandra Pavilion, **AVH** – Aust Village Hall; **CCCP** – Castle Court Car Park; **CH** – Cossham Hall; **Chy** – Chantry; **DGCL** – Daldry Gardens Community Lounge; **EVH** – Elberton Village Hall; **MH** – Olveston Methodist Hall; **OS** – Olveston School; **PH** – Olveston Parish Hall; **StM** – St Mary's Church, Olv.; **StMA** Almondsbury Church; **TBCh** - Thornbury Baptist Church; **TMH** – Thorn. Methodist Hall; **URC** Thorn United Reform Church; **WR** – Wesley Rooms; **AC** - Aust Church

MEETING POINT is pleased to provide contact details for any clubs or organisations in the Parishes. Please contact our Advertising Manager whose details can be found on page one.

Advertisements are accepted on the understanding that the description of goods or services is correct and true. Every effort is made to see that the information is correct and reliable. Neither Meeting Point, its editor, nor management committee accept any responsibility or give any guarantee in case of any dispute or claim as to quality, condition or delivery of commodities or services. It is not to be taken that publication implies recommendation of any advertisement. It is always advisable to check prices when ordering goods or services. Views expressed by contributors are not necessarily those of the editor or Meeting Point magazine.

Copyright Meeting Point 2008. Copyright remains with the author(s) and Meeting Point. No part of this publication may be reproduced, stored in a retrieval system, or transmitted in any form without the prior permission of the copyright owners.

Meeting Point is printed by E.G. Brown (Bristol) Ltd.