

Meeting Point

Volume 36, Number 11, August 2012

The community magazine for the villages of Olveston, Tockington, Old Down, Lower Hazel, Awkley, Ingst, Aust, Elberton and Littleton upon Severn

EDITOR:

Phyllida Pyper
Stock Farm
Littleton upon Severn
Bristol BS35 1NL
Tel: 01454 416422
*meetingpointeditor@
gmail.com*

ASSISTANT EDITOR:

Angela Williams
Ashlea
Haw Lane
Olveston
Bristol BS35 4EG
Tel 01454 612850
*meetingpointmagazine@
gmail.com*

ADVERTISING:

Nigel Dawes
Cromwell House
The Street,
Olveston
Bristol BS35 4DR
Tel: 01454 201558
julie.dawes@tiscali.co.uk

Publication date
1st of each month

Material for September 2012
to the Editor or Deputy Editor
by 6th August 2012.

From the Editor

This month Meeting Point says a heartfelt thank you to Marcus Bean whose weather record has been a regular feature in the magazine over many years. We hope not to lose touch and have been promised an end of year weather round up. In his final quarterly review, Marcus tells us that this June has been "the wettest for England and Wales since records began in 1766 and the wettest June here since 1998."

As this packed edition of Meeting Point shows, life goes on, albeit with waterproofs and wellies at the ready. The indomitable English spirit will not be dampened by a drop of rain. Happy holidays!

Our cover this month is by Elaine Thomas. The first article accompanies it.

Meeting Point Founded in 1976 by the Anglican and Methodist churches in Olveston, near Bristol

**Meeting Point magazine and Meeting Point Directory are online at the
Community Website: www.olvestonandaust.com**

Small is Beautiful

Elaine Thomas

I have so enjoyed creating the fishes for the cover of this month's Meeting Point, as they were one of the first pieces of art I have worked on for some time. They will be finding their way to the Bristol Royal Hospital for Children, where they will join the collection of reference material and art supplies that fill our 'Star Boxes', which the children there enjoy and use to create their own magical artworks.

Elaine Eastman, the wonderful lady who runs the Play Department at the hospital, does such an incredible job, and she and her very talented team use these materials to inspire the children every day. I think that it is so incredibly important that we all use our creativity to help others, and I have seen so many things over the years that have affirmed my belief that small deeds can have an amazing effect and uplift people in their moments of need.

We are so blessed to live in such an incredible community, with so many kind, loving, caring and generous people giving their time and energy to so very many worthy causes. I was so overwhelmed to see so many people during the Jubilee celebrations who I had not seen for a while, and was exhausted from all the hugs!

I so appreciate all the kind messages, cards, gifts and good thoughts that I have received over the last few years, and I wish to take this opportunity to let all those people know how very much those small deeds have meant to me.

I have written the following little poem as a thank you to all those people. When I was a child, my grandmother Laura often recited her favourite poetry to me – lines from Shakespeare, W.B.Yeats, Rudyard Kipling and Christina Rossetti – and so a love of poetry has always been a part of my life. The touchstones of love are far reaching and may ripple out to those around us in many remarkable ways.

*A small good thought may change a day
In some bright unexpected way,
That may bring hope to shine a light
Of love into the darkest night.
For love is working all the time
And may you find a perfect sign
In some small word or deed or flower,
Revealing wonders in this hour.
The small good thought, its love unfurled,
May ripple out around the world.*

Village person: Geoff Chappell

Pat Thirkettle

On 22nd June, Geoff and Linda Chappell attended the Diamond Jubilee Thanksgiving Service in Gloucester Cathedral. It was a lovely summer's day, and after the service they enjoyed a sparkling drink and cakes in the cloisters, where the Earl and Countess of Wessex mingled with the guests in an informal and friendly way. Geoff had been invited as a result of his S.Glos Community Award which he had previously received from Dame Janet Trotter, the Lord Lieutenant of Gloucestershire. He had been proposed for this by Kate O'Brien of Southern Brooks Community Partnership for his work with the Parish Hall (see later).

Geoff gained his interest in community work from his father, who was the first Conservative Councillor for Southmead, serving for twelve years. Geoff and Linda are Bristolians, and lived in Henleaze when they married and their two daughters were young. However, when their eldest daughter Katie was eleven it was decided that she would go to Marlwood and, believing that you should live in the community where your children attend school, the family left Bristol for Olveston. It was a big change for them all but they soon settled well within the community. They acquired a dog and, while taking it for walks, Geoff found himself meeting more people. He formed a plan to co-ordinate the Village of the Year entry in 2001, and Olveston won, for the first time. Since then Geoff has alternated the organisation with Rod Williams. The second time Olveston won under Geoff's watch (in 2005) he went to Tyntesfield for the presentation.

In 2002 there was concern about planning issues within the village. After being approached by many local people, Geoff and Linda organised a meeting in the Parish Hall to enable residents to air their views. This was well attended and, as a result, a group was formed under Richard Lloyd. This produced the Village Design Statement, a document which is not legally binding, but which is taken into consideration by local Planning Committees. Geoff was then approached by Nikki Clark to re-invigorate plans for the Golden Jubilee celebration, which it had been hoped would raise money to finish the Olveston play area, but which had stalled. He helped form a committee, of which Bruce Farr was very supportive. This resulted in a great success and raised the requisite money.

Now we come to the catalyst for the first paragraph. Having never been on a stage and being unable to read music, Geoff was coerced into taking part in the Parish Players' production of the Mikado in 2001. Since then both he and Linda have been stalwarts of the company. While using the Parish Hall facilities Geoff realised how out dated they were. It was proposed that he become the Parish Players' representative on the hall committee. Some years later he was elected Chair and set out a plan to bring the Hall into the twenty first century.

Firstly it was decorated, then when the Pre School needed an outside play area Geoff realised that it was very important to work closely with them, and rooms were reorganised and patio doors fitted. The floor was sanded which made a great visual impact, and hot running water was installed which enabled the Hall to be used more frequently and bring in much needed revenue. In 2010 the Parish Hall Committee helped Pre School to obtain a substantial grant in order for them to build their own facility separate to the Hall, and the present state of affairs was achieved. The reordered Hall now has a new kitchen in a more accessible place, and is able to maximise revenue by offering twenty first century facilities during the day as well as at evening and weekends.

Geoff stresses all along that he is a facilitator. He works very hard behind the scenes, sees what needs doing, and organises the people with the skills to achieve it. The Hall now has a Constitution, Trustees' Indemnity Insurance, Equal Opportunities Policy, and Mission Statement, which are all basic requirements and necessary when applying for grants.

Take a look at the web site www.olvestonparishhall.co.uk

Now Geoff is typically looking to the future and a new challenge. He would like to see representatives from the Hall's user groups become more involved, and the first step would be for each group to have a member on the Hall committee. It is our Parish Hall; most of us use it sometime or other, so perhaps we should become more involved within our community by supporting the small group of dedicated volunteers.

New Littleton church guide book

A new guide to St Mary de Malmesbury, Littleton-on-Severn is now available from the author Lyn Carnaby. Illustrated in full colour, with many photographs and detailed floor plans, it tells the history of the church from its earliest times to the present day. Price £6.00 (all proceeds will be shared between St Mary de Malmesbury Church, Littleton Village Hall, the Severn Area Rescue Service and the Great Western Air Ambulance). Contact lyncarnaby@gmail.com tel 412097 for a copy, including £1.50 for postage and packing.

Jubilee thank you

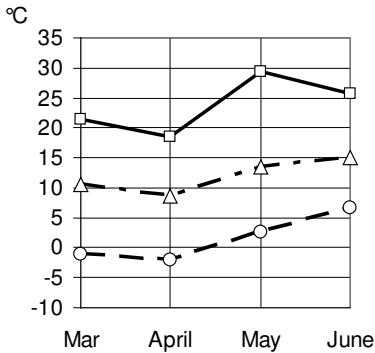
Brenda Cook

On behalf of myself, and I am sure many other villagers, I would like to say thank you to everyone who was involved in organising and running the Olveston Jubilee celebrations. It was a truly lovely village weekend and enjoyed by us all. Thank you for all the hard work and time given, it was very much appreciated.



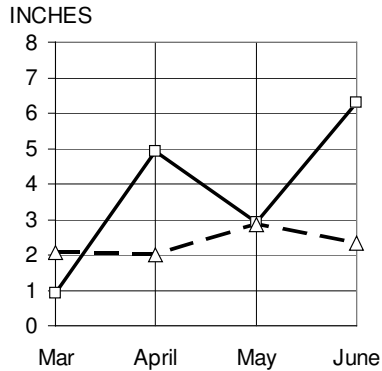
Weather Record

April to June 2012 *Marcus Bean*



TEMPERATURE

—□— Max. —○— Min. - -△- Ave.



RAINFALL

—□— Actual - -△- Ave.

April

The first week of the month continued the high pressure theme of March, being reasonably warm and dry. After this, for the rest of the month, a succession of low pressure systems passed over us with their fronts bringing significant amounts of rain and heavy showers which, together with strong Northerly winds, made it feel cold. The month ended with an Atlantic storm bringing torrential rain and gale force wind.

Average pressure for the month was about 13 millibars below normal and average temperature was approximately 1.75 °C below that expected for the time of year, whilst rainfall was 2 ½ times the average and the wettest for over 100 years.

May

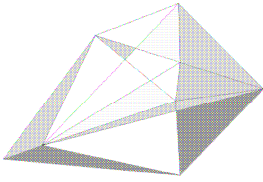
The first half of the month was very cool, being 2 °C below average and with significant rainfall caused by Atlantic lows constantly passing over us. The second half of the month was a complete contrast, with very warm temperatures and no rain for the last twelve days of the month.

Average rainfall, temperature and pressure were all close to norm for the time of year.

June

The jet stream running about 700 miles further South than normal channelled a constant stream of Atlantic low pressure systems over the Southern half of the Country, resulting in a very wet and windy month with sunshine levels being down by about 30%.

Average temperatures were 1 °C below norm and pressure was about 10 millibars lower than expected. Rainfall was approximately 4 inches above average making this the wettest June for England and Wales since records began in 1766 and the wettest June here since 1998.



Sevenside Churches Festival: 8/9 September 2012

Saturday 8th : Church Events Plan

Almondsbury, St. Mary's Family activities from 10 am to 4 pm.

Olveston Methodist Church A display giving details of the history of our Church. Tea, coffee and biscuits will be served in the morning and tea and cakes in the afternoon.

Aust, St John's Open from 10am - 4pm. Tea/coffee. Exhibition on church, river, and community.

Compton Greenfield, All Saints An exhibition of paintings by local artists and photographs. Church will be open from 10.30 to 4 pm. Tea and coffee will be available.

Littleton-on-Severn, St. Mary de Malmesbury The Church will be open during the day 10.30 – 3pm and there will be an exhibition.

Olveston and Tockington Methodist Church Open in Olveston from 10.30 - 3pm for tea and coffee and a small exhibition.

Olveston, St. Mary's Church open as usual during the day on September 8th, there are several displays of the life of the church in the community. There will be a concert of well-loved songs, poetry and comedy 'Magic Moments' from a number of local performers at 7.30 pm in the evening, all welcome.

Pilning, St. Peter's Church open for a coffee morning, followed by an informal soiree of light music in the afternoon, given by the Festival Choir.

Sunday 9th: Sevenside Churches "Celebration of Faith"

6.00pm at newly refurbished **Old Down Manor** with spectacular views down the Severn Vale and Old Down Park (courtesy of Mr & Mrs A. Banks):
A joint service led by BBC 2's Roger Royle featuring individual testimonies, youth band, combined choirs and joyful singing of well-loved hymns.

Alpha Comes to Olveston

Rev. Roly Bain

What Alpha offers, and what is attracting thousands of people, is permission, rare in secular culture, to discuss the big questions – life and death and their meaning.

The Guardian

You've seen it advertised on the sides of buses and bus shelters and all over the place. Did you know that over 18 million people across the world have attended an Alpha course? I'm glad to say that Alpha is now coming back to Olveston!

Alpha is a chance to meet with other non church-goers and learn more about the Christian faith. Our aim is to offer you a non-threatening, and 'no-pressure' environment, to ask the questions you have always wanted to ask. No question is too controversial!

Was Jesus just a 'good man' or was he really the son of God? How can a 'loving God' allow such suffering in the world? How can the Bible story be reconciled with the modern understanding of science? Is there more to life than our seventy-odd years on this planet?

There may be no such thing as a free lunch but there is however such a thing as a free supper! Why not come along to an Alpha taster course on Thursday 20th September at 7.30pm at Churchill House, at the bottom of Vicarage Lane, Olveston. Natasha and Paul Harrod will be your hosts, and the evening will start with a meal before you get a chance to watch a DVD talk from Nicky Gumbel, the founder of Alpha International.

The course will continue each Thursday evening (with a break for half-term) for about ten weeks. We would love it if you could attend each session - and dinner is provided each and every week, so that's loads of free suppers! However, there is no need to commit to that just yet. Please just come along to the first evening session on the 20th September and see what Alpha - and the amazing message of Jesus - is all about!

If you would like to find out more about Alpha then please talk to Natasha or Paul Harrod. You can ring them on 613642 or email paul.harrod@gmail.com Alternatively come and see me, or call me on 616593.



The Garden Line

From articles (1991-92) by *Cecilie Turton*

August is an excellent month for taking cuttings from shrubs, heathers hydrangeas, geraniums and fuchsias. Also, all herbs. I find bay hard to root, but keep on trying.

Roses are not difficult to root. Select your favourites and gently pull off mature shoots, tidy the heel, take off thorns and leaves for about 4"; your cutting should be about 9" long. Make a slit with a spade in the nursery bed, put in a sprinkling of silver sand, water well and place slips in at least 4" deep, then firm with your heel. Give a final watering and leave for one year. I'm sure you will get 99% success.

Most of the viburnums are easy to root this way and there are a great many to choose from. Friends, I am sure, are willing to spare a slip or two. Viburnum Bodnantense Dawn, which has beautiful pink scented blossoms in winter, is worth rooting from slips.

If bulb lifting was not completed last month, the job should be done as soon as possible.

Dig over old flower beds of hardy herbaceous plants which have become weed infested. Put aside precious plants in a nursery bed – sun and wind need to get to the plot to sweeten it and kill unwanted growth. Replant at the end of October after feeding well.

Sow lettuce until the middle of the month for early winter cutting. Sow thinly, Winter Density or Arctic King are two good ones.

Wanted: alto or tenor sax player

To join a saxophone group called called The Standing Stones.

Vicki Lansdown writes: "We meet on a Tuesday evening in Falfield and play at fairs, parties and sometimes at retirement flats. The money we raise from this is donated to the Thornbury stroke group. We are looking for new players to join us, preferably an alto or tenor player. Anyone interested can contact me on vjr981@hotmail.com or my mobile 07786 262163."

Aust Parish Council Matters *Tim Pyper*

austparishcouncil@googlemail.com

The council met on 10th July and some interesting issues were discussed.

Planning issues:

The Parish Council had received three applications for planning permission relating to houses in Littleton. These were carefully considered and we made representations to South Gloucestershire Council about them. The Parish Council has a major concern about all applications to try to ensure that there can be no repetition of the problem that arose when the site of Quarry House was divided and the part with a "new" house sold off. There are many sites in Littleton (and also Elberton for that matter) where infilling might be possible on space grounds. But the Council believes that the open character of the two villages and the fact that they are in the green belt means that we should try to prevent subdivision of houses and gardens to create separate dwellings, save for permitted annexes that are for occupation by the same family. This policy has been supported by planning inspectors on appeal.

Further discussions have been held with South Gloucestershire planning department about enforcing the breaches of planning control at Greenacres landfill site in Aust and the land adjoining Quarry House, Littleton. Your Council continues to monitor these issues closely.

Highway matters

The Council raised the state of the ramp from Sandy Lane, Aust, to the M48 eastbound slip road with South Gloucestershire council. Some improvement has been made as it is part of the Avon cycle way. However, South Gloucestershire Council does not consider that it is responsible. We are trying to find out who is.

Littleton water treatment works

The Council has complained to Bristol Water about the discharge of waste water onto the highway. It is hoped to have a meeting with the company shortly to see what can be done about this.

The Council does not meet in August and the next scheduled meeting will be on Tuesday 10th September.

Oveston Parish Matters

Richard Rogers

olvestonpc@googlemail.com

WOW, what a wonderful weekend of events, the Diamond Jubilee celebrations across the country and particularly in the parish were fantastic, and the Parish Council would really like to add its thanks to everyone involved in organising and marshalling the events on Bank Holiday Monday, and especially to those on the organising committee who worked so hard to make the day so special.

As part of the Diamond Jubilee celebrations, Oveston Parish Council proposed to give a commemorative mug to every child who lives in the parish (from birth up to those 11 year olds currently in Year 6). So far with the help of the local schools, preschools, and toddler groups, we have managed to distribute a mug to nearly every child in the parish – but if you have not yet received one please contact the Clerk urgently. Several parishioners have also expressed an interest in the mugs, and as promised, they can now be purchased for £3.50 each while stocks last.

The theft of the stone trough by the pump at Old Down has been widely reported in the press. Recently the roof of the Old Down bus shelter has been maliciously damaged and lead has been stripped from the Oveston Parish Hall. Please could everyone remain vigilant and report any activities directly to the police who are monitoring the situation. Thank you to the local residents who acted so promptly and built the replacement trough, to maintain this lovely parish landmark.

The BT telephone boxes in Tockington and Old Down are now owned by the parish, and the telephony equipment has been removed. Each box is now looked after by a local group of parishioners, and we look forward to giving out more details in the future.

During the recent Parish Assembly, the council explained why it believed the time was right for the community to join together to map out its vision for the next 5 to 10 years. This is very important because it will help us as a community to capture our joint aspirations, identify how and where we might wish to utilise opportunities offered by the 2012 Localism Act, and put us in a stronger position to influence future decisions affecting our parish. Government (national and local) will see that we have thought seriously about our needs and aspirations, and it will help focus increasingly scant resources on agreed priorities, as well as provide evidence for funding bids, so it is essential that we seize this opportunity now.

There is a considerable amount of work to do, as we need to produce a questionnaire and canvas all households and community groups in a collaborative process to ensure a comprehensive and inclusive vision, possibly leading to a formal Neighbourhood Plan. This process will only be successful if

there is strong support from the community, and the first step is to set up a Steering Group to take the work forward, ideally meeting in September for the first time.

Please think seriously about helping us to do this. The work will be challenging but rewarding and will help provide for the future that the community here would want. If you can help or want more information/ updates please contact Val Hudspeth (01454 614984), or write/ e-mail the council. There is an additional website www.olvestonparishvision.co.uk which we will be regularly updating with information and progress.

OPTA Update!

Olveston Parish Twinning Association (OPTA) has been very busy so far this year with fund-raising and other activities to support our twinning with Bréhan, in Brittany. There was a quiz in February, the famous 'Wine Challenge' in March, and in June OPTA members dressed up and joined the parade in the Jubilee celebrations and we sponsored a bouncy castle in the Tockington field. Now we have two more dates for your diary.....

Murder Mystery Evening October 5th 7.30pm Olveston School Hall

For this Murder Mystery Evening we have booked a company of actors who will provide the 'Murder' and the 'Mystery'. There will be tables of 8 people and you can get your own group together or simply join in with others when you arrive. Each table will be given a chance to interview each of the 'suspects' and deduce the identity of the murderer. It is all very light-hearted and promises to be great fun! There will be a simple supper provided which is included in the price and there will be a bar. Tickets are available from Noel Clarke (Tel:01454 614099) and will cost £7 per person.

Visit to Brehan

26th – 29th October 2012

Would you like a weekend in France for the cost of the travel? That is what you'll get if you come with us on our next visit to Bréhan, which falls in the middle of the October school holiday. We have been visiting Bréhan for 16 years now and always have a great time as we're entertained by our very friendly French hosts. During the weekend we can expect interesting shared outings and, of course, marvellous eating and drinking. Don't worry if you don't speak French – many of our hosts speak English and we get by with a bit of miming from time to time. We spend much of the time as a group, which eases any language difficulties, and we stay with host families in and around the village. There are children of all ages there and they love to welcome ours.

Continued overleaf

We leave Olveston by coach in the afternoon of Friday 26th October and travel to France by overnight ferry, arriving in our coach in Bréhan on Saturday morning. We return on Monday 29th October, travelling on a daytime ferry and arriving home in the evening. The only cost is for the travel and to take a small gift for your French hosts. The price will be £100 per person and any child still at school goes free! We will need a deposit of £25 per person before 10th August to secure your place. Interested? If you'd like to come or just want to talk about it to find out more, please contact either Marelin Orr-Ewing (01454 610081) or Noel Clarke (01454 614099). If you are not a member of OPTA you will need to join for the year, but this only costs £10 for a family or £5 for an individual.

Anyone for Tennis?

Olveston & Tockington Tennis Club is keen to welcome new members.

We are based behind Olveston Parish Hall with two main courts that have floodlights, a third court with a practice wall, a Club House by the main courts and a toilet and wash basin in the top left hand corner of the Parish Hall.

We are a family friendly club in a beautiful location that seeks to cater for the needs of all types of player, whatever their level of ability. We do this by providing the following:

Teams in Avon LTA League - We have five men's teams and two ladies' teams in the local leagues. If you are interested in playing in a team contact David Fielding (01454-614792; fieldingstewart@yahoo.co.uk) or Helen Bradley (01454-617252; hpb.thebarn@googlemail.co).

Coaching and Practice Sessions

Ladies – Monday evenings after the Juniors at 7.00pm for most of the year. Just turn up and speak to Mary Long or telephone 01454-625778.

Practice night for the Men's Teams – Wednesday evenings at 6.30pm onwards for most of the year. Just turn up and speak to John Garrett or telephone 07974-109919

Adult Club Night – This is open to adult members of all abilities and selected juniors on Thursday evenings for most of the year starting at 6.30pm. Just turn up and speak to Harry or Angela Greenslade, or telephone 01454-613780.

Membership Fees: Family £144; Seniors £72; Juniors £36; Special rate for the unemployed, students and senior citizens £36; A court key costs £3. Everybody is welcome to join. Please phone Mary Long on 01454 625778 or email andy@washingpool.freeserve.co.uk

Letter to the Editor

Why we are campaigning against the proposed wind turbine development at Ingst

I wanted to write and bring the proposed wind turbine development to the attention of your readers, as well as advising them how to contact the Olveston Windfarm Action Group, which was set up to campaign against this development. REG Windpower proposes a windfarm of 3 giant turbines on farmland between Ingst and the M4/M48 motorways. The turbines will be 126.5m in height and would be some of the largest in the country - and 2.5 times the height of electricity pylons!

Most people recognise the need for alternative energy supplies in today's world. But we need to challenge whether the proposed development at Ingst is the right place to achieve this.

The majority of the local parishioners, across a number of the local parishes, are against this proposed development, as demonstrated by the survey in Olveston which returned a vote of 86% against the development. The concerns we have over the proposed development are:

1. The impact on the Severn Vale which is designated part of the Green Belt
2. The impact on the view across the rural countryside, including the setting for the Grade I listed Severn Bridge
3. The noise levels and the effect on health and safety, quality of life and development of our children
4. The proximity to people's homes (some as close as 600m)
5. The impact of building and construction work on the local environment and people living nearby.

The developer for this site, REG Windpower, is still pursuing this development and preparing to make a planning application. When they do, parishioners will receive guidance notes from OWAG telling them how to object.

Our contact details are below:

website: www.owag.co.uk

email address: no2m48windfarm@mail.com,

phone: 07414 499962

Many thanks
Claire Barnard, OWAG Chair

In the interests of balance, the Editor offers REG Windpower the right to reply to this letter in a future issue of Meeting Point.

Parish Players

need children to take part in their production of *The King and I* to be staged Feb 12th -16th 2013. Age range 5-10 years. Interested children are invited to attend a simple audition and meeting at Olveston Methodist church on Sunday September 9th at 2pm.

More details from Linda Evans 01454 413887

News from St Mary's, Olveston

2013 Calendars

St Mary's are producing another calendar for next year, this time featuring archive photos from Olveston Parish Historical Society. They will be on sale from August onwards, either in church or at the Stores, at the same price as last year of £6, plus 50p for a cardboard envelope.

St. Mary's barbecue

On Aug 18th St Mary's are having a BBQ at Hillside House, Haw Lane, from 6.30pm. Bring your own food to barbecue, salads will be provided, and there will be a paying bar. It should be a very good evening - it usually is, but if it's raining, it's cancelled! No admission charge - just come!

Friends of St Mary's

The prize winners in June's draw, held on 14th June 2012 at the Friends' Committee Meeting were:-

<u>Amount</u>	<u>Number</u>	<u>Name</u>
£150	457	Mr. S. Webb, Olveston
£75	150	Mr. B. Fennell, Alveston
£25	432	Mrs. J. Prothero, Buckover
£25	182	Mr. J. Hitchcock, Olveston
£25	338	Mr. & Mrs. R. Simmons, Olveston
£20	180	Mrs. I. Anderson, Olveston
£20	210	Mrs. C. Black, Thornbury
£10	262	Mrs. A. Knight, Olveston
£10	291	Mrs. I. Phillips, Olveston

Friends of Daldry Gardens

The friends of Daldry Gardens are having a trip to Cardiff Bay on Thursday 23rd August leaving Daldry Gardens at 11.00am and returning about 4.00pm.

The charge will be £8 per person. If anyone would like to join us please contact John Ellis at 19 Daldry Gardens or phone 626280 for further details.

Olveston and Tockington WI Report

We would like to thank everyone who attended the Coffee Morning at the home of Julie & Nigel Dawes, on Wednesday 13th June, in aid of Multiple Sclerosis. A fantastic sum of £605.00 was raised for this worthy charity. June went out with a bang! – Olveston and Tockington WI won the Avon Kurling championships!

Our first event in July was a talk by a Magistrate who soon had us role-playing. We were intrigued to discover how hard it is to agree on a decision and sometimes came to unexpected conclusions. A very interesting and enlightening evening. The following week a group of us, with husbands and friends, went to Tyntesfield and visited the house and gardens. We were surprised and delighted by the changes made since it first opened to the public – a most enjoyable day.

Traditionally we have no “proper” meeting during our holiday month of August so we shall meet up at the Anchor for a relaxed dinner together! We’ll be back to our meetings at the Parish Hall in September with a “Creations Workshop”. Visitors will be very welcome – 7.30 on the 11th.

The Family of Rosemary Wilson

We thank everyone for their kindness and sympathy following the death of our mother, Rosemary. We were much comforted by the many cards and tributes which illustrated how much she was loved and respected by all.

We thank Mum’s friends and neighbours for the support they gave her over the months she was unwell and for the support they gave us following her death. Our deepest gratitude goes to June Robbins without whom we would not have known where to start. We are particularly grateful to Sue West for the flowers for the reception, to Geoff and Linda Chappell, and also Anne, who gave freely of their time to make tea and coffee and to Gavin Pitcher for his practical day to day support.

Alwena and Gwennan, Rosemary’s daughters.

F.O.S.S. Grand Day Out

Pat Thirkettle

A voluntary group, Friends of South Gloucestershire Strays (F.O.S.S), was formed two years ago on the initiative of Celia Bourne, the Dog Warden. Members help by walking and socialising dogs, which could mean as little as talking to them through the bars of the kennel. As many dogs are frightened of men, male volunteers are very welcome. F.O.S.S. will take dogs to breed-specific or other reputable rescue groups; put up posters for lost dogs and for rehoming; supply bedding, toys, treats and fund ongoing care costs. A few months ago a badly injured alsation called Sadie was brought in, and F.O.S.S tried frantically to raise money for her vet bills. Sadly, despite their raising the funds for her emergency operation, she died but she is now the publicity face for future fund raising. The group's co coordinator is Emma Gowler who lives in Severn Beach. Should anyone be interested in volunteering, her email address is: emboalch@hotmail.co.uk

On Saturday 25th August F.O.S.S. is having a grand fund raising Dog Show, to be held at Gumhorn Lane which is first right off Pilning Street, about one and a half miles past Awkley. Doors open at 9.30, from 10 – 12: there will be displays of dog agility, flyball, scootering and good citizen awards, and you will have a chance to participate! From twelve noon onwards there will be a pedigree dog show and a fun dog show – dog most like its owner, dog with waggiest tail etc. Pay on the day, £1 to enter.

There is plenty for children, bouncy castle, refreshments and a barbecue under marquees in case of rain. There will be a raffle stall, bottle stall and some craft stalls. If anyone would like to set up a craft or home made goods stall (£10 plus donation of a raffle prize) you need to apply to Julia in advance, mobile 07768285009 evenings only. More information is on the web site www.fosgs.comule.com

All in all it should be a great day out for the family right on our doorstep, and will support a poor but very worthwhile local group that is increasingly busy owing to the flood of strays brought in by the economic downturn.

1st Olveston Scout Group A.G.M.

The Annual General Meeting of the Olveston Scout Group will be held on Sunday the 9th September 2012 at 4pm at The Scout Hut, Old Down Hill. Anyone with an interest in scouting is welcome to join us. Should you have any enquiries please contact - Colin Prewett on 01454 614210

See next page to read what the scouts get up to! – Ed.

1st Olveston Scouts Group Hike



14th June 2012 Cote Farm Aust

On Thursday 14th June, 12 Cubs, 9 Scouts and loads of Beavers invaded Cote Farm, suited with Bush hats and booted with Hunter wellies ready for the onset of a stormy night of wind and rain forecast by our reliable Met Office.

Safety briefing over we headed off, NNE up through Cote Lane. A brief stop to explain why there were so many stables at the farm, (explaining once there weren't cars to transport us around and horses were used to do the work instead of tractors). Some really looked at me mystified - no cars? ... 'you wot?', 'how did that work?' Off we set again, first obstacle - giant puddle. Oh! How I forgot how much fun it was to be six and to have a four inch muddy puddle in my path....

Next hurdle, unexpected cow in field with baby calf aaargh, not a problem, keep quiet, walk to the side ... they listened ... it worked! They were even quiet enough to spot two roe deer run into the wood. Serious wow factor. Off to Potato Tump, the venue for 1st Olveston's survival camps. Since we'd last been here another group of scouts had built a full sized stile and also the start of a permanent shelter under the expert guidance of John. They were so impressed! Another safety briefing and then they were let free to explore. We started a small singsong, and ended up with a cub special, 'Do you know the muffin man' - priceless. Time to make tracks; surprisingly the return journey didn't take as long. Was it the thought of a BBQ on our return?

Yep, we could smell the BBQ from half way up the lane. The new gas industrial BBQ was up and working, pumping out Olveston burgers and copious sausages, followed with dough twists, chocolate bananas wrapped in foil and, trump card played by an ex scout, waffles covered in a choice of golden syrup, strawberry sauce or sugar, all washed down with hot chocolate.

Parents arriving, names being ticked off to make sure all were accounted for and finally no accident report forms to submit to Scout Association HQ :)
A big thank-you to Nikki, Anne, Caroline and Jamie for sorting out all the behind the scene jobs that made the group hike a success.

New recruits needed! If your son or daughter is aged 10.5 - 13yrs and would like to come and join us at scouts we have spaces in September.

Lynda SL 1st Olveston 01454 632484 07790 348726 Lynda.spratt@me.com

Race Report – Olveston School Fun Run

Olveston School Fun Run in aid of ARBAN UK was held on Saturday 30 June and was a GREAT success. Lots of families took part and were grateful for the sunshine and break in the rain. It was excellent to be joined by families from Bowsland Primary School in Bradley Stoke which is twinned with Olveston School. The first race was the 1K which involved three laps around the school field. Lots of young runners took part, led out by Paul Harrod who had helped everyone warm up with a fun set of stretches. The smiling faces as children completed their laps and received their medals were great to see. Well done to James Harrod and Eleanor Ford who were the first boy and girl past the finish.

At 10.30 the 5K racers set off from the playground, running a muddy route around the fields and through the woods behind the school. Mark Johnson arrived back first in a fast time of 18 minutes 49 seconds with James Harrod the first boy, Rosie Williams was the first girl and Cimone Johnson the first woman. It was brilliant to watch the runners race to the finish, spurred on by people cheering along the road and inside the school playground. We were all very impressed with how fast the young runners completed the course.

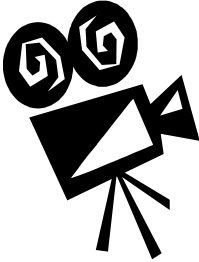
The Fun Run Committee would like to thank everyone who helped make the event such a success: all the marshals who gave much appreciated directions and support to the runners, the FOOS team who provided fantastic tea, coffee and bacon butties; Olveston and Bowsland teachers who helped marshal and start the races; Nora who was “race sweeper”; all the runners and spectators and everyone who helped create such a fantastic community event. All money raised for ARBAN UK is being used to support the clinic in Jheelpur Slum in Dhaka. The clinic has been built and Dr Misty is seeing patients on three days a week. Over 600 patients have already been treated. It is great to be able to make a difference to the lives of those who have nothing. For more info see www.arban.org.uk.

We plan to make this an annual event and hope even more members of the school and community will get involved next year. Watch out in Meeting Point for the 2013 date and take a look at race photos on www.olvestonschoolfunrun.org.

Thank you

Rita and John Hitchcock would like to thank everyone for their kind thoughts, cards and so much practical help during Rita's recent indisposition.

Movies at St Mary's: August *Trevor Anderson*



Q: *Why can't we give film titles in Meeting Point?*

A: *Because the copyright rules only allow us to publicise these inside St Mary's Olveston and inside the quarterly Newsletters we email to members of St Mary's Movie Club.*

So if you want all the titles, full details and regular updates, either pick up a leaflet in church or **join the Movie Club**. It costs nothing to join – just email me at trevoranderson@btinternet.com.

FIVE movies this month at St Mary's Church Olveston. Everyone is welcome and there is no need to book:

MONDAY MOVIES: Mon 6th Aug at 7.30pm

An airplane crew takes ill. Surely the only person capable of landing the plane is an ex-pilot afraid to fly. But don't call him Shirley. *Cert 15*

MONDAY MOVIES EXTRA: Mon 20th Aug at 7.30pm

Four seasons on a floating monastery offer a sharp lesson in life in this ravishing Korean drama. *Cert 15*

CHILDREN'S MOVIE CLUB at 10.00am every Monday in the hols

Mon 6th Aug: Spielberg's action packed adventure on the sea *Cert PG*

Mon 13th Aug: Another animated adventure for the prehistoric pals *Cert U*

Mon 20th Aug: Three little girls challenge the world's greatest villain *Cert U*

At all the shows, refreshments are available and admission is FREE.

Old Down Cricket Club

150 Club Winners July:

£50 Olivia Maunder £15 Jim Donaldson £5 Bill Finch

Latest £25 Bonus Ball Winners:

9th June Neil Cross 23rd June Angus MacDonald 7th July Alex Grosvenor

August Fixtures at The Park

4th August 2nd XI v YMCA 'A'

11th August 1st XI v Stoke Bishop

18th August 2nd XI v Coalpit Heath

25th August 1st XI v Bradley Stoke

The Bristol Model Engineering & Hobbies Exhibition 2012

17th, 18th & 19th August at Thornbury Leisure Centre, (BS35 3LG).

This is one of only a handful of exhibitions of this size held each year throughout the UK.

For further information and advance tickets view the organiser's web site:
www.bristolmodelengineers.co.uk

Alveston Flower & Craft Show

Saturday 1st September Jubilee Hall & Youth Centre
Opens 2.00pm Cream Teas available 2.30 – 4.15pm

Tockington Harvest Fayre

September 15th 2p.m on Tockington Green

Are you having a clear out over the summer? Then please consider giving your surplus items for the Fayre!

We would welcome donations any books, DVDs, good quality bric a brac, china, small pieces of furniture, handbags, toiletries, toys, games or even unwanted gifts!

Please contact, Garry Phillips tel 613241, Maggie Spooner tel 610053, Jane Sawyer on jane@prologue.co.uk to arrange a collection or 'dropping off time.' Alternatively bring it along to Olveston Methodist Hall on Saturday mornings. All contributions welcome.

Our Competitions this year will be:-

Children's Fancy Dress: 'Olympic theme' – Can you come dressed up as a Mascot, Olympic horse rider, cyclist or basketball player? Perhaps a sports personality or even the Olympic Torch! 2p.m start on the green.

Competitions to be displayed inside the Church:

Children's - **'Garden on a plate'** and **'Design and make your own, unique Olympic torch'** from junk.

Photographic competition for adults and children – theme – **'Sport in Action'**.

Please write your name & phone number on the reverse. Any size print welcome!

As usual, we will receive competition entries on the evening before or on the morning of the Fayre and prizes will be given for the best entries.

Yours faithfully

David Bone

By the time you read this, it is my earnest hope that we will be able to use a prayer of thanksgiving in the Book of Common Prayer which includes the words “O Lord God, who has justly humbled us by thy late plague of immoderate rain and waters, and in thy mercy hast relieved and comforted our souls by this seasonable and blessed change of weather,” – which just goes to show that in times gone by the weather could be as unseasonable as it has been this year. “June just rains and never stops, thirty days and spoils the crops; in July the sun is hot; is it shining, no it’s not!”; we may smile at the Song of the Weather by Flanders and Swann, but it is no laughing matter for our farmers, when you can’t get the hay in or put the cattle out, and it is not much fun for any of us. We must keep a weather eye open for any of our neighbours who really are suffering and need our support.

So let us look forward to some red letter days of decent sunshine, especially come the school holidays. “Red letter days”, as I’m sure most of you know, were Saints days, highlighted in red ink in old church calendars. There is only one in August (St Bartholomew on the 24th) but there were two in July: Thomas (3rd) and James (25th). I’d like to hear it for Thomas, that most recognisably human of all the disciples for two reasons, firstly, like us all, when we are honest, he had his doubts and wanted proof; like us all he had to learn that there are some things, like the love of a partner, the loyalty of a best friend, that we just have to take on trust. It’s ultimately destructive when we say “prove it!” And secondly, he is most human for having moments of sheer inspiration; Peter, it might have been, who first called Jesus the Messiah; arguably, Thomas it was who first saw the full significance of who Jesus was, where his message of authority came from: “my Lord and my God”. Nice to shout hooray on a red letter day!

From the Registers of St. Mary's Olveston

23 rd June	burial of ashes of Kathleen Eliza (Kit) Finch
30 th June	marriage of Mathew Scott and Hannah Grosvenor
14 th July	marriage of Julien Cornacchia and Alison Carr
15 th July	baptism of Crispin Giles Lancelot Rowell and Amelia Kathleen Alington Rowell Son & daughter of Christopher & Kate Rowell

Church News

ST MARY THE VIRGIN, OLVESTON

Aug 5	8am	Holy Communion	Rev Roly Bain
	10am	Holy Communion	Rev Roly Bain
	6pm	Evensong with Choir	Mrs Ann Lloyd
Aug 12	8am	Holy Communion (BCP)	Rev David Bone
	10am	Morning Worship with Choir	Mrs Janet McBride
	6pm	Holy Communion	Rev Philip Rowe
Aug 19	8am	Holy Communion	Rev Roly Bain
	10am	Holy Communion with Choir	Rev R Bain & Mr D Jones
	6pm	Evensong	Rev Philip Rowe
Aug 26	8am	Holy Communion (BCP)	Rev Roly Bain
	10am	Fourth Sunday	Rev Roly Bain
	6pm	Evensong (BCP) with Choir	Rev Philip Rowe

Information on services correct at time of going to press.

Contacts:

Rev Philip Rowe, 01454 613223; email: office@stmaryssevernside.org.uk

Rev Roly Bain for Baptisms, Marriages & Funerals 01454 616593.

Verger: Mrs. June Robbins, 01454 617491

www.stmarysolveston.org.uk/index.html

PRAYER GROUP: Mondays, 2.45pm in the Church

WEDNESDAY HOLY COMMUNION: At 9.00am led by the Rev. Roly Bain
except 4th Wed when it is at Olv. Methodist Ch.

CHAPELRY OF ST JOHN, AUST

Aug 12	10am	Holy Communion	Rev David Bone
Aug 26	10am	Morning Prayer	Rev David Bone

Hon. Curate: Rev David Bone, 01454 614601

Church Warden: Terry McLeavy 633680

ST MARY DE MALMESBURY, LITTLETON-ON-SEVERN

Aug 5	9am	Matins	Rev David Pole
Aug 19	9am	Holy Communion	Rev David Pole

Contact: Rev. David Pole 01454 414810; www.sthelensalveston.org

ST JOHN THE EVANGELIST, ELBERTON

Aug 12	9am	Matins	Rev David Pole
Aug 26	9am	Holy Communion	Rev David Pole

Contact: Rev. David Pole 01454 414810; www.sthelensalveston.org

OLVESTON AND TOCKINGTON METHODIST CHURCH

Aug 5	10am 6pm	Tock Ch. St Andrews.	Morning Worship led by Rev Sandy Williams Evening Worship led by Rev David Hardy
Aug 12	10am	Olv. Ch.	All Age Worship led by Mr Glyn Varney
Aug 19	10am	Tock. Ch.	Morning Worship led by Miss Kitty Barrett
Aug 26	10am	Olv Ch.	Morning Worship with Holy Communion led by Rev Sandy Williams

NORTHWICK LUNCHEON GROUP: This meets at 12.30pm on Wednesday 8th Aug. To book your lunch please ring 416528

TOCKINGTON LUNCHEON GROUP No meeting in August. Next lunch 20th September

COFFEE MORNINGS: Sats 10.30 - 12 noon in the Olveston Methodist Hall.

CREAM TEAS Will be served on Bank Holiday Mon. 27th August on Tockington Green or in the Chapel.

|

CONTACT: Rev David Hardy 0117 9693135
dandlhardy@btinternet.com

THE VINE, AWKLEY

The Vine, Pilning Street, Awkley

We meet in a relaxed, informal manner for worship, prayer and conversational Bible studies incorporating Communion, on Sundays at 10.30am and Mondays and Wednesdays at 7.30pm We also visit other Churches and events so please check our Notice Board or contact .

Mike and Barbara Matthews, tel. 07512 917229 or email:
thevine_awkley@hotmail.com

AUST EVANGELICAL CHURCH Family Worship 11.00am Evening Worship 6.30pm. For more details please phone 632564

THE OASIS CHURCH, OLD DOWN

Aug 5	6.30pm	Paul Ashford
Aug 12	6.30pm	Mike Jenkinson
Aug 19	6.30pm	Brian Miller
Aug 26	6.30pm	Rev. Colin Lewis

Prayer Time every Thurs 7.30

For further information please contact **Ceri Morgan-Davies** 413043

Paul Ashford, 07774 110814 or email: **Paul@CalebGroup.net**

LITTLETON EVANGELICAL CHURCH

Family Worship every Sunday at 11am

For details tel. 413247

BRISTOL CHRISTIAN FELLOWSHIP -Twice monthly meetings are held at 4pm at Thornbury Baptist Church (Youth Block)

Contact 0117 3050969 www.bcfnet.com

RC CHURCH OF CHRIST THE KING, Thornbury -

Sat Vigil Mass 18.00 Sun 8.30am Mass 11.00 Family Mass

Tel 01454 412223 www.ctk-thornbury.org.uk

SOCIETY OF FRIENDS (QUAKERS), Thornbury

Meeting for Worship Sundays 10.30-11.30: The Hanover Room, The Chantry, Castle St. Wheelchair accessible. Children welcome with prior notice.

Local contact: Ben & Candia Barman 01454 412603

National: www.quaker.org.uk Bristol area: www.bristolquakers.org.uk

Diary Dates for August 2012

The information given below is believed to be correct as we go to press.

2 nd Thu	Coffee Shop Beat Surgery Thornbury Farmer's Market Olveston Toddlers Open Mic at White Hart	10.00-12.00 10.30-11.30 9.00-1.30 2.00-4.30 8.30pm	OS+ OS+ MH
4 th Sat	Coffee Morning	10.30-12.00	MH
5 th Sun	Quiz at Sports & Social Club	8.15	AP
6 th Mon	Children's Movie Club Monday Movie	10am 7.30pm	St M StM
7 th Tue	Tockington Toddlers Friends of Daldry Gardens Coffee Morning	9.30-11.30 10.30-12.00	WR DGCL
8 th Wed	Royal British Legion Women Ploughman's lunch	12.00	DGCL
9 th Thu	Coffee Shop Olveston Toddlers	10.00-12.00 2.00-4.30	OS+ MH
11 th Sat	Coffee Morning Coffee Morning	10.30-12.00 10.30-12.00	AVH MH
13 th Mon	Children's Movie Club Severn Vale Flower Club, Demonstration Monday Movie extra	10.00 2pm 7.30pm	StM AH StM
14 th Tue	Tockington Toddlers	9.30-11.30	WR
15 th Wed	Jazz at the White Hart Olveston	8.30pm	
16 th Thu	Coffee Shop Thornbury Farmer's Market Olveston Toddlers	10.00-12.00 9.00-1.30 2.00-4.30	OS+ MH
17 th Fri	Model Engineering exhibition .at Thornbury.Leisure Centre also 18 th & 19 th		
18 th Sat	Coffee Morning Barbecue at the Harries' unless wet!! Jazz on a Summers Evening	10.30-12.00 7.30pm	MH CH
20 th Mon	Children's Movie Club	10.00	StM
21 st Tue	Tockington Toddlers Olveston Parish Council Meeting	9.30-11.30 7.30pm	WR AP
23 rd Thu	Coffee Shop Friends of Daldry Gdns Trip to Cardiff Bay	10.00-12.00 11.00-4pm	OS+

	Olveston Toddlers	2.00-4.30	MH
25 th Sat	Car Boot Sale at Marlwood School Coffee Morning FOOS Dog Show at Gumhorn Lane Pilning	1.30-3.30 10.30-12.00 10.00am	MH
27 th Mon	Children's Movie Club	10.00	StM
28 th Tue	Tockington Toddlers	9.30-11.30	WR
30 th Thu	Coffee Shop Beat Surgery Olveston Toddlers	10.00-12.00 10.30-11.30 2.00-4.30	OS+ OS+ MH

Looking ahead to September

15 th	Tockington Harvest Fayre		
27-29 th	Calendar Girls	7.30pm	AH

KEY: **AC** Aust Church; **ACR** – Almondsbury Church Rooms; **AH** – Armstrong Hall; **AMC** – Olveston Methodist Church; **AMH**- Olveston Methodist Hall; **AP** – Alexandra Pavilion; **AVH** – Aust Village Hall; ; **CH** – Cossham Hall; **Chy** – Chantry ;**CS** Castle Sch. **DGCL** – Daldry Gardens Community Lounge; **EVH** – Elberton Village Hall; **LVH** Littleton Village Hall **MH** – Olveston Methodist Hall;**OMC** Oliv Meth Ch **OS** – Olveston School; **OST** – Olveston Stores; **OV** – Olveston Vicarage; **PH** – Olveston Parish Hall;**StH** St Helens Alv **StM** St Mary's Church, Oliv.; **StMA** Almondsbury Church **SMH** St Mary,s Ch. Hall Thornbury;**TCh** Tockington Chapel **TBCh** - Thornbury Baptist Church; **TMH** – Thorn. Methodist Hall; **URC** - Thornbury United Reform Church; **WR** – Wesley Rooms.

Contact details for any clubs or organisations in the Meeting Point area can be found in the Meeting Point Directory on the community website: www.olvestonandaust.com If you would like to update your organisation's details, please email: meetingpointsecretary@olvestonandaust.com

Advertisements Neither Meeting Point, its editor, nor management committee accept any responsibility or give any guarantee in case of any dispute or claim as to quality, condition or delivery of commodities or services advertised in this magazine. It is not to be taken that publication implies recommendation. It is always advisable to check prices when ordering goods or services.

Views expressed by contributors are not necessarily those of the editor or Meeting Point magazine.

Copyright Meeting Point 2012. Copyright remains with the author(s) and Meeting Point. No part of this publication may be reproduced or transmitted in any form without the prior permission of the copyright owners.

Meeting Point is printed by **Bristol Business Centre**.