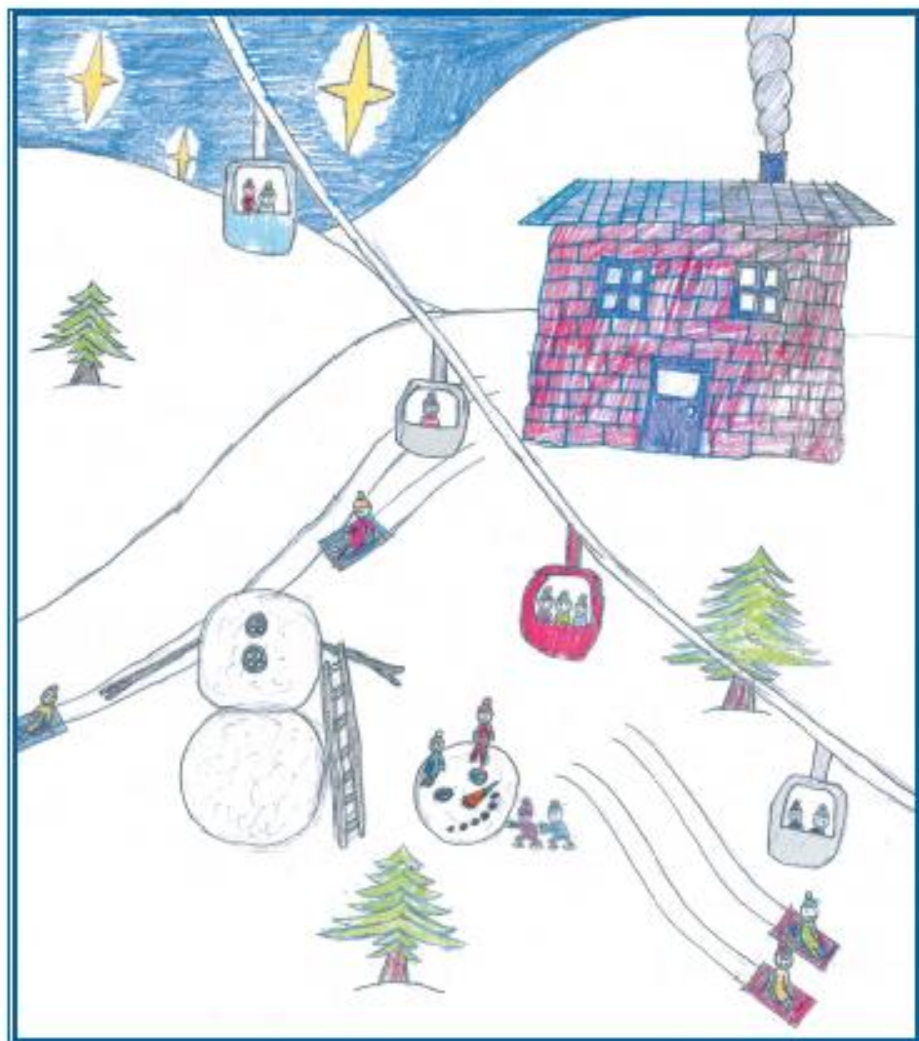
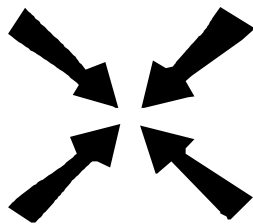


MEETING POINT



DECEMBER 2015



Meeting Point

Volume 40, Number 3, December 2015

The community magazine for the villages of Olveston, Tockington, Old Down, Lower Hazel, Awkley, Ingst, Aust, Elberton and Littleton upon Severn

EDITOR:

Chris Bolton
The Old Meeting House
The Green, Olveston
Bristol BS35 4EJ
Tel: 01454 610056
*meetingpointeditor@
gmail.com*

ASSISTANT EDITOR:

Angela Williams
Ashlea
Haw Lane
Olveston
Bristol BS35 4EG
Tel 01454 612850
*meetingpointmagazine@
gmail.com*

ADVERTISING:

Nigel Dawes
Cromwell House
The Street,
Olveston
Bristol BS35 4DR
Tel: 01454 201558
julie.dawes@tiscali.co.uk

Publication date
1st of each month

**Material for January 2016
to the Editor or Deputy Editor
by 30th November 2015.**

From the Editor

As you would expect, there's a very strong Christmas theme this month. You can go to a Christmas Fayre, Christmas concerts, and Christmas services. You can sing Christmas carols, go to a Christmas bazaar, a Christmas coffee morning or a Christmas afternoon tea. You can watch a Christmas-themed film, or you can puzzle away at the Meeting Point Christmas Prize Number Puzzle. And of course you can admire the Advent Windows in Olveston and Tockington.

For after Christmas, there is a Panto, and we even offer you something useful to do with your used Christmas stamps.

Meeting Point wishes all its readers a very Happy Christmas, and best wishes for 2016.

The picture on this month's cover is by Grace Marr, of Year 6, Olveston School.

Meeting Point Founded in 1976 by the Anglican and Methodist churches in Olveston, near Bristol

**Meeting Point magazine and Meeting Point Directory are online at the
Community Website: www.olvostonandaust.com**

Aust Parish Matters

Tim Pyper (austparishcouncil@googlemail.com)

England Coastal Path

Natural England is preparing plans for a coastal path around the whole of England. They have started to consider the route from Aust to Brean Down and should be talking to all owners and managers of land that is likely to be affected. If you have land which is near the coast, it might be a good idea to check the website and to get in touch with them if you haven't heard. The website is at:

<https://www.gov.uk/government/collections/england-coast-path-aust-to-brean-down> email westcoastalaccess@naturalengland.org.uk

The public will have a right of access from the route of the path to the shore. The plan is to prepare a route plan and consult on it in 2016 and to have the path open in 2017.

South Gloucestershire Council Consultations

The council has launched two important consultations. One relates to waste disposal (including collections and recycling) which runs until February; and the other to a re-run of the Policies Sites and Places plan to supplement the Core Strategy - a recent planning appeal held that South Gloucestershire has a shortfall in its five year land supply for housing, and this is a consultation about where more homes should go. Comments must be in by early January. You can comment on both issues via the South Gloucestershire website.

West of England Joint Spatial and Transport Strategies.

Bristol, South Gloucestershire, Bath and NE Somerset and North Somerset councils are working together to develop the West of England Spatial and Transport Strategies (which are about where to build the homes the area so desperately needs and how to deal with transport issues). You can see the proposals and the consultation at www.jointplanningwofe.org.uk. The deadline is 29th January 2016.

Oveston Parish Matters

*Richard Rogers
olvestonpc@gmail.com*

Parishioners will be disappointed to learn of the recent resignation of Ms Alyson Kennea from Oveston Parish Council due to family commitments. Alyson joined the Council in May following the local elections and had already become involved in helping on the Recreation & Leisure Committee, overseeing Safety and Maintenance of the Old Down Play Area and had recently joined the Planning Committee. The Parish Council wish Alyson well

for the future, and are now undertaking the necessary steps to find a successor, in conjunction with South Glos Council (please see the Co-option advert elsewhere in this month's Meeting Point).

The Housing Needs Survey has now been distributed to every house in the Parish, and the deadline for return to South Glos Council is 14th December 2015 - contact South Glos Council directly if you require a further paper copy (although a few spares may still be available from the Parish Council). The Parish Council encourage everyone to complete this questionnaire as thoroughly as they can, to clarify what is actually needed for all parishioners.

Olveston Parish Council would like to thank the parishioners who have helped produce the Parish Vision Report and are continuing to look at ways of addressing the different issues raised; the parishioners who have helped with the creation of the Olveston Parish Steering Group, and the volunteers who have so far stepped forward to help with the sub-groups looking at subjects as varied as a Cemetery; Traffic & Parking; Mechanisms for Delivery; Housing; Retail; and, Communications. Please contact the Clerk if you too wish to be involved.

Olveston Parish Council would again like to thank the editors for their hard work in producing Meeting Point each month. The Council would also like to wish everyone a Merry Christmas and best wishes for 2016.

Are you interested in becoming an Olveston Parish Councillor?

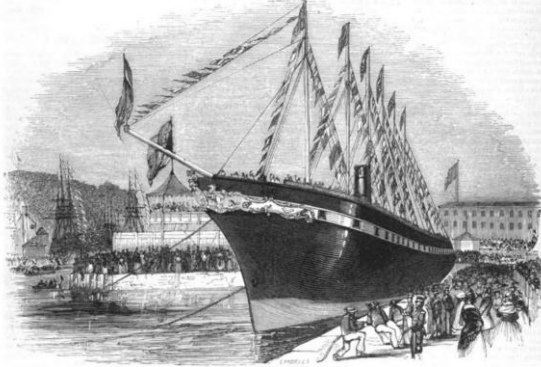
The role of a Councillor is to represent parishioners and ensure the needs of the Parish are met. A good knowledge of the parish is an advantage.

Olveston Parish Council (which meets once a month) is looking to co-opt a Councillor, so if you would like to apply for the post, please write to the Parish Council, giving details about yourself and your background, why you are interested in becoming a Councillor and what experience/ qualities you could bring to the position. Prospective candidates are welcome to discuss any queries or questions either with the Chairman (John Hughes), a member of the Council (Geoff Anderson, Adrian Baxter, Sue Hunter, Richard Panes, Pat Savage, Tony Williams, Tom Witherbed), or the Clerk.

Closing date for applications is 8th January 2016. Candidates will be invited to an informal discussion with Parish Councillors on or about 15th January 2016 (times to be agreed). Please contact the Clerk either by e-mail to olvestonpc@gmail.com, or by telephoning 077 8057 2594.

Life at Sea on the SS Great Britain

Wednesday, 6 December 2015, 7.30pm, Olveston Methodist Church



What must it have been like to travel across the ocean for weeks at a time on board Brunel's great ironclad steamship?

Who were these travellers? From what walks of life did they come? Why did they make these journeys?

You have the chance to find out. Cyril Routley will

give an illustrated talk on life at sea on the SS Great Britain in the nineteenth century, using the ship's passenger lists and passengers' diaries and letters.

This meeting is open to everyone and all are very welcome.

£2 for a single meeting, payable at the door, or you can buy **annual membership for just £5**, also at the door, which entitles you to this and four more talks. You can see the rest of the programme on the website.

Olveston Parish Historical Society www.olvoston.com/historical-society

Olveston & Tockington WI

The October meeting was very well attended, with a number of guests. The speaker was Frances Benton; she gave an interesting and entertaining talk on her 'Passion for Pearls'. She explained the difference between the rare and expensive natural pearls and the more accessible cultured pearls, together with information on colour and environment for pearls to develop. Profits from the sale of Frances's pearls, which she strings herself, go to a charity in Durban, South Africa, to feed, house and educate street children, some of whom have grown up living in the city's sewers.

The next open meeting of the W.I. will be on **January 12**, when Emma Slade will talk on her work as a policewoman.

News from St Mary's

Roly Bain

Salvation Army Concert

Easton Salvation Army Brass Band return again to St Mary's for a Christmas Concert on December 5th at 7.30pm. Tickets at £5 are in aid of the Salvation Army's great work. There will be a licensed bar but profits from that will come to St Mary's. Tickets from June Robbins on 617491 or from Olveston Stores.

Toy Service

On December 6th at 10am we're having a Toy Service, and you are invited to bring presents for children and teenagers who wouldn't otherwise get anything. Please don't wrap them. They will be distributed by the Childrens' Society. 'Reach Up Reach Out Puppets' will be taking part in the service, as well as the Tockington Manor Choir.

Carols Galore!

Our Christmas Singalong with the choir at the White Hart is on December 18th at 9pm, and all are welcome. The Inner Wheel are having their Carol Service in church on December 16th at 7.30pm, and both Tockington Manor and Olveston Primary School are having theirs too. Our own Village Carol service is on the 20th at 6pm. Our Feast of Fools with the enthronement of a child bishop is on December 27th at 10am.

Next Quiz

Our next Quiz is on January 9th at 7.30pm. Please book early if you want a seat or a table. Teams are a maximum of six people, and it costs £5 per person. It's stew and dumplings this time, and there is, of course, a licensed bar. Contact Roly on 616593 or roly@rolybain.co.uk if you want tickets or to be on the mailing list.

One Life. What's it all about?

Christianity Explored is an informal course for anyone who wants to think about what Christianity says about the meaning of life. You can ask any question you want, and meet other people who are interested in the same topic. A course will be running on Thursday evenings in January/February at Littledown, Haw Lane, Olveston. Each session will begin with cheese and wine and will include a DVD about the life of Jesus Christ. You can come to one or more sessions. For more details, please contact Lynn or Peter Shelley on 01454 612201.

The Line Of Coins

*Nikki Clarke,
1st Olveston Beaver Scouts Leader,
Tel. 614099*



A big thank you to the people of Olveston for helping 1st Olveston Scout Group raise a whopping £620 at their Line of Coins and coffee morning in October. The money will be used to help the group to pay for some of their activities in the coming year.

The Beavers, Cubs and Scouts turned up laden with tubs of coins that they had collected - plus we had some amazing donations from people in the village, who collect their loose change all year, and began their mission of joining Olveston Stores to the Crusty Loaf Bakery with a line of coins.

The young people really enjoy this fundraiser as it brings the Scout group into the community where they are able to demonstrate their commitment to Scouting. Putting the coins down is only half of the event...picking them up and counting them ready to bank is a whole different ball game!



We also ran a coffee and cake morning at the Methodist Hall which raised a good chunk of that money

and we extend a BIG thank you to all the parents who kindly made and donated cakes to the event and who gave their time behind the scenes. Separate thanks have to go to Andrea Davies-Cren for her legendary freshly cooked waffles...delish!

Thank you once again to everyone who helped make the morning such an enjoyable success.

Same time next year?

St Peter's Hospice

CHRISTMAS BAZAAR

The Annual Bazaar for St Peter's Hospice will take place in the **Thornbury Methodist Church Hall on December 5th between 10.00am and 12noon.** There will be a variety of Stalls including Cards, Gifts, Crafts, Home-made preserves, Cakes and Puddings, Books, plus many more. Raffle and Teas. Entry by Donation.

CHRISTMAS CONCERT

It's Party time on **Saturday 12th December at the Armstrong Hall, 7.30pm,** with the Great Western Chorus, a treat not to be missed. Bring your own nibbles, bar available, tickets £10.00 each, available from the Thornbury Town Hall from 16th November.

Please come along and enjoy a good start to Christmas. Thank you for supporting St Peter's – your local Hospice.

Litter Pick

There will be a litter pick on Saturday 5 December.

Please meet at the Parish Hall car park at 1pm.

Tockington Tardis Calling

The Telephone Box in Tockington - right outside the Swan - is going from strength to strength. Thanks to all the lovely people who leave stuff for the Thornbury Foodbank in there and also to those who borrow and donate books.

It's heart-warming to see that there are donations for the Foodbank every single week and unfortunately the demand for this activity continues. Please don't use the Tardis to get rid of unwanted household items such as enormous double duvets (you know who you are!!!) as it just means I have to lug them to a charity shop in Thornbury; the Foodbank only deals with edible and personal hygiene articles.

Otherwise - thanks again, best wishes for Christmas and I hope you all have an amazing 2016

Claire 01454 616329

Parish Players present "Annie"


"Annie" is set in 1933 against the backdrop of the Great Depression brought about by the Wall Street crash of 1929. The Company are exploring the American politics of that time, when Franklin D Roosevelt had just been elected President of the United States. As part of the storyline, Annie meets FDR's cabinet. Inspired by her optimistic signature song "Tomorrow", they enthusiastically embrace a New Deal for America.



Annie and her orphan friends are rescued from the machinations of the scheming Matron, Miss Hannigan, by billionaire 'Daddy' Warbucks who wants to adopt Annie. Miss Hannigan's jailbird brother Rooster and his dizzy girlfriend Lily St Regis masquerade as Annie's long-lost parents. Their plot to collect the \$50,000 reward is thwarted by Warbucks, his loyal secretary Grace, his butler Drake and the FBI! All is happily resolved in time for Christmas.

This delightful family show is being presented by Parish Players in the Parish Hall during half-term next February 10th to 13th. **Make a note in your diary that tickets will go on sale on Saturday 9th January in Olveston Stores.**

The cast features both regular and new members – more details in January. It is being produced once again by our hard working Director, Linda Evans, so expect an outstanding show!

'I don't need anything but you' 

'Tomorrow' 

You're never fully dressed without
a smile' 

'NYC' 

Thank you, from June Lyons and Irene Reid

June and Irene would like to thank everyone who came to their retirement celebration in October. Between them they had served a total of 58 years on the Parish council. A special "Thank you" is due to Pat Savage, Richard Panes and Richard Rogers, the clerk, for all their hard work in organising the party.

They both enjoyed meeting so many members of the local community they had worked with over the years, including Sheila Plummer, former councillor and warden of Daldry Gardens, who had travelled from Devon.

As a token of their appreciation for the evening they have given 200 species daffodil bulbs to be planted under the trees in the conservation area on the Aust road. They hope the flowers will make a colourful spring display for the Parish in the years to come.

SOS from TSS

Thornbury Stroke Support need a few extra men to help at the Monday morning swimming sessions at Thornbury Leisure Centre. You don't need to be a great swimmer, it's a very friendly group and there's coffee afterwards. Sessions run from about 9am to 10.30am. Please contact Ann Cant on 418772 if you can help.

Old Down Cricket Club

Tony Gardner 07889 727729

150 Club Winners November 2015:

£50 Robin Davey
£15 Graham Clare
£5 Bill Finch

Latest £25 Bonus Ball Winners:

10th October Simon Davis
17th October Tony Williams
24th October Mike Rowen

Up the Down!!

Christmas Communion



The Friends of Daldry Gardens announce that there will be a Community Christmas Communion with June Robbins followed by mince pies, cakes and biscuits.

Wednesday 16 December at 2.30pm in Daldry Gardens Communal Lounge.

Everyone welcome for this peaceful hour's oasis in the Festive Season.

Charity Carol Service

Inner Wheel Club of Thornbury are holding a **Carol Service** with a collection for **Brain Tumour Support** at **St Marys Church Olveston 16th December at 7pm**. Please support us. All Welcome.

Olveston Parish Hall

Autumn Supper

The Autumn Supper was held on Saturday 17th October. A delicious two course meal followed by tea and coffee and of course a raffle was enjoyed by all! The entertainment for the evening was provided by the **Ukulele Jam** whose members include some local talent! Please make a diary note for **Saturday 8th October 2016**; it is an evening not to be missed.

Remembrance Day Lunch

This was a new event hosted by the Parish Hall on Remembrance Sunday. Sausage and mash followed by crumble and custard was voted a resounding success. This is something the **Hall Committee** hope to run on an annual basis.

Parish Fish and Quiz

For those of you updating your 2016 diaries the quiz will be held on **Friday 26th February 2016**. Further details in the January issue.

Thank you to all Parishioners for your support throughout the year. Merry Christmas and a very prosperous New Year.

Christmas Prize Puzzle

Jan Winter

In this addition sum each of the ten letters represents a number between 0 and 9. Can you work out what they are?

$$\begin{array}{r} A + \\ MERRY + \\ \underline{XMAS } = \\ TURKEY \end{array}$$

Just to re-assure you, none of the first letters in any word are 0.

The Editor (who recalls this puzzle from primary school days!) is offering a prize of £10 to the first correct solution he receives; if you are under 16, please state your age. Reply to meetingpointeditor@gmail.com.

Police Report

PCSO 9317 Kelly Dimery

Reported crimes for October included:

Theft of heating oil from a residential property in Greenditch Street.
Theft of tools from a vehicle in Moor Lane, Tockington.

Here are a few tips on how to keep your property safe at Christmas.

- Lock all windows and doors, leave a radio on and put lights on a timer when you are out.
- Keep presents out of sight and don't leave packaging on display outside your house.
- Keep valuables like car keys, bags and mobile phones out of sight and out of reach of windows, doors and cat flaps.
- Remember to lock your car and close all windows and put personal belongings out of sight in the boot.
- Don't leave shopping, gifts or other valuables like sat navs, laptops or mobile phones on display in your car.
- Register your valuables with www.immobilise.com

Friends of St. Mary's

The prize winners in the November draw, held on 5th November 2015 at the Friends' Committee Meeting were:-

<u>Amount</u>	<u>Number</u>	<u>Name</u>
£150	580	Mr P Haworth, Olveston
£75	539	Dr M Wright, Olveston
£25	399	Mrs G Crossley, Olveston
£25	460	Mr & Mrs R Smith, Olveston
£25	175	Mrs B Morgan, Tockington
£20	375	Mr P Savage, Olveston
£20	360	Mr T Roper, Almondsbury
£20	250	Mr & Mrs R Williams, Olveston
£10	588	Mrs M Shurmer, Olveston
£10	221	Mrs S A Pearce, Ingst
£10	439	Mr D Skinner, Tockington
£10	513	Mrs M Bailey, Lower Hazel
£10	302	Mrs J Rawles, Olveston
£10	559	Mrs C Healey, Olveston

If you are not yet a member and wish to join the lottery, please telephone Andy Phillips on 01454 614890.

Handel's Messiah

Alveston Singers look forward to welcoming you to their performances of **Handel's Messiah** with soloists from the Royal Welsh College of Music and Drama, including ex Castle School pupil Aaron Holmes.

7.30pm, Tuesday 15th December at St Helen's Church, Alveston

7.30pm, Saturday 19th December at St Mary's Church, Thornbury

Free admission with retiring collection for

Stroke Association & Bristol Teenage Cancer Trust

This will be our final concert with Kate Phillipson-Masters. Sadly Kate is retiring as our conductor after 28 years. Please join us in wishing her a long, happy and healthy retirement.

Movies at St Mary's: December

Trevor Anderson



Here at **St Mary's Movie Club** in Olveston we celebrated our FIFTH birthday at last month's Monday Movie. Debbie Harries had made a delicious birthday cake which daughter Lottie had magically decorated for us with a 'movie theme'.

We'll be showing FOUR movies this month, all chosen to help brighten the dark days of December. As I'm sure you all know now, we show films for the 'grown-ups' on the first and third Monday evenings of each month and for 'children of all ages' every Monday morning during school holidays. All films are shown in St Mary's Church, there's a friendly welcome for everyone and there is no need to book.

MONDAY MOVIES (*Recent releases and popular classics*)

Mon 7th Dec at 7.30pm: Eight stories involving the love lives of more than a dozen characters are brought together over one Christmas. An unashamedly feelgood, multi-character romcom distinguished by stand-out performances by Bill Nighy and Emma Thompson. (*Cert 15*)

MONDAY MOVIES EXTRA (*Quality 'non-mainstream' films*)

Mon 21st Dec at 7.30pm: Want a change from the 'traditional' Christmas film? If so, try this one. It's nothing to do with Christmas at all, but we hope it will still 'present' you with a bright smile. Based on the international best-selling novel by Jonas Jonasson, it tells the wonderful and unlikely story of a 100-year-old man who decides it's not too late to start over. (*Cert 15*)

CHILDREN'S MOVIE CLUB (*Every Monday morning in the hols*)

Mon 21st Dec at 10.00am: Funny, sweet and family-friendly seasonal fare about two rival schools vying to outdo each other in the annual Christmas nativity play. (*Cert PG*)

Mon 28th Dec at 10.00am: This brightly coloured brand of gibberish-fuelled insanity is almost complete nonsense, but it's good natured, enjoyable nonsense nonetheless. If you're a fan of Despicable Me films then you'll love this one. (*Cert U*)

Refreshments available at all the shows, plus licensed bar in the evenings. Admission is free although a **donation** at the end towards expenses is always appreciated.

For copyright reasons we can't name the films here, but if you **join the Movie Club** we'll send you titles and full details by email. It costs nothing to join – just email me at trevoranderson@btinternet.com.

Olveston & Tockington Methodist Church

Saturday 5 December: Christmas Coffee Morning at Olveston 10am -1pm

In the Methodist Hall: Coffee and soft drinks with mince-pies, biscuits from 11.45: soup and savoury nibbles

In the Chapel: Christmas produce stall (cakes, puddings etc.), preserves and chutneys, table decorations, gifts, Olveston Parish Historical Society publications, cards, Brownies' stall.

Live music, including Brownie Choir.

Proceeds to charities: Action for Children, St Peter's Hospice, Christian Aid

Sunday 13 December:

2.30pm: **Festive Tea** in Tockington Chapel, in aid of Caring at Christmas (see separate invitation)

6pm: **Methodist Carol Service** in Olveston Chapel

Tuesday 22 December: at 6.30pm

Carols on the Green at Tockington

Sing carols on Tockington Green (weather permitting – please bring torches), otherwise in the Chapel; concluding with a nativity tableau in the Chapel – children are invited to dress the part, eg shepherds, wise men, angels. Followed by refreshments.

Festive Afternoon Tea Invitation

Tockington and Olveston Methodist Church invite you to a Festive Afternoon Tea **on Sunday 13th December at 2.30, in Tockington Chapel (on Tockington Green)**, to celebrate the true spirit of Christmas and the joy of giving.

We will be holding this afternoon tea event **in aid of Caring at Christmas**, a local charity that over the Christmas period provides shelter, beds, warmth, clothing, food, friendship and safety to all those who are homeless and living rough on the streets of Bristol.

There will be no charge for refreshments, but a donation to the above cause would be warmly welcome.

Bring your friends and family along to enjoy a relaxing seasonal get-together during the busy run-up to Christmas.

"There are few hours in life more agreeable than the hour dedicated to the ceremony known as afternoon tea" - Henry James.

Anita Thorne's new books

The Revd Anita Thorne, who many will remember as a local minister and one of the very first women priests to be ordained, has recently self-published two books.



The first book is called **“God Talk” by Revd Anita Thorne.** It is a book of personal reflections on Anita Thorne's walk with the one she calls God, compiled over the years in prose and poetry. The reflections come with joys and sorrows and are linked to ordinary life events for a Vicar, church activities, plus humorous life situations. It is divided into sections as follows: Finding God in Different places and Situations, God in the wilderness, God in Ordination Joy, Christmas Reflections, Easter Reflections, God in the Tears, Mountain Moments, God in the Laughter, God in the Ordinary. These reflections are not so much about defining God, as writing about where Anita has found God on her journey.

The second book is called **“Digby comes Out” by Digby and Revd Anita Thorne** and it covers in a humorous way the family's church life from beginning in a village where everything was fairly predictable, to the times when all that could be predicted was TV cameras, radio microphones and reporters in the run up to the ordination to the priesthood of the first women priest in Bristol Diocese. It goes through the joys and sorrows of a move to a new parish, family weddings and deaths and explains Pet services, Dawn Services and Digby's tasks of evangelising the foxes and supporting his Mrs Vicarage in church events. It ends with a message from heaven from Digby the Tibetan Holy dog, to his successor Tobias of Temple, also a Tibetan Holy dog.



The books are being offered at a price to cover the printing costs. The book **“Digby Comes Out” is £7** with £1 on each book sold to be donated to the Dorchester Benefice. The book **“God Talk” is £10** with 1£ donated to the Dorchester Benefice. Please contact Anita on 01305 265118 if you would like a copy, or E mail on thorne391@btinternet.com. Anita will get the books to you.

Advent Windows

Our Advent windows will start being lit from the 1st December. We hope you enjoy them as we prepare for Christmas!

1. The Knoll, Lower Tockington Road, Tockington.
2. Pear Tree Cottage, Upper Tockington Road, Tockington.
3. 39 Laxton Close, Olveston.
4. 3 Green Court, Olveston.
5. Hawkfield, Haw Lane, Olveston.
6. 12 Orchard Rise, Olveston.
7. Lavender Cottage, Vicarage Lane, Olveston.
8. The White Hart, Olveston.
9. 2 Cromwell Court, Olveston.
10. 46 Laxton Close, Olveston.
11. Waypoint, New Road, Olveston.
12. Holly Cottage, New Road, Olveston.
13. Musthay, Upper Tockington Road, Tockington.
14. Tockington Lodge, Hardy Lane, Tockington.
15. 4 Russett Close, Olveston.
16. The Wesley Rooms, Tockington.
17. 1 Cromwell Court, Olveston.
18. Green Lane Garage, Olveston.
19. 3 Grey Gables, Vicarage Lane, Olveston.
20. Holly Cottage, Church Hill, Olveston.
21. Cromwell House, The Street, Olveston.
22. Morton House, New Road, Olveston.
23. April Cottage, The Street, Olveston.
24. St Mary's Church. Olveston.

Carols Around the Christmas Tree

Christmas is coming, so we make no apology for revisiting **Carols Around the Christmas Tree** for the eighth year in succession, as it has become a firm favourite in the Christmas calendar, and what better way for local people to get into the festive mood than to come and have a jolly good sing!

On Saturday 5 December, from 10.00 am until 12 noon, we extend a warm welcome to everyone. Come along and join in with youngsters from local primary schools, teenagers, the U3A Recorder Group, Community Choirs and Students of the Northavon School of Drama, who (under their performance name of the Northavon Youth Theatre Company) will be performing their 40th Anniversary Production: **THOROUGHLY MODERN MILLIE**, next Easter. The youngsters have just scooped the Rose Bowl trophy for *'Best Youth*

Production' in the South West, with their version of **SUNSHINE ON LEITH**, so they should be in fine voice! There will be a collection in aid of Thornbury and District Community Association and, as usual, this event takes place by the large Christmas tree, in the middle of St Mary Centre, Thornbury, with Kate Phillipson-Masters on the keyboard, so do come and join us!

Stamp Out Blindness



Registered Charity No. 1153851

Please Send Us Your Used Christmas Stamps

A big thank you to all of you who have sent stamps already. Your support will enable the stamp appeal to be an ongoing fund raiser to support the Fight against Blindness

If you are reading this for the first time - we are asking if you could spare a few moments each day to tear off the stamps from your letters (**if you cut around them we can get a higher price**) and save them until you have a fair number (perhaps enough to fill a jiffy bag or similar) and post them onto us at the address below. Whether entire collections or individual stamps, British or foreign, franked or not, we would really appreciate your donations, as every little helps, thank you.

Retinitis Pigmentosa (RP) is a disease of the eye that leads to loss of vision and blindness. The Charity RP Fighting Blindness works hard to stimulate and fund cutting-edge research to find a treatment or cure and support those affected - some 25,000 people in the UK alone.

Never heard of Retinitis Pigmentosa? Do you belong to a Club or Group who would like us to come and give a talk about the condition RP and the work of the charity? If so we would be pleased to receive an invite; the talk is designed to be interesting informative and humorous.

Ron & Gina Pritchard 22, Huckford Road, Winterbourne, Bristol BS36 1EA
01454 772927

bristolsglofightingblindness@gmail.com

www.rpfightingblindness.org.uk

Something To Beat Those Post-Christmas Blues!

The Thornbury Branch of the WEA, the UK's leading voluntary provider of adult education, will be offering the following course in the local area:

C3526586: MIXED MEDIA ART (TEXTILES)

DATES: Every Friday 9.45am to 12.45pm from 22nd January 2016 for seven sessions. (Half term 19/2/2016)

VENUE: Turnberries, Bath Road, Thornbury (near Rock Street Car Park and Bus Stop).

TUTOR: Nadia Addonizio

COST: £92 plus materials charge of £12.50. Please enquire about help with fees if you receive benefits – this may be available for you.

No prior knowledge or experience is necessary for this course. All adults are welcome. Small friendly class. For more information, or to book a place, ring 01392 457300 or online at www.wea.org.uk

Local contact: Kate 01454 610071.

Almondsbury CE Primary School Christmas Fayre

Friday 4th December, 6pm - 8pm

Join us for a festive evening with loads of stalls including games and crafts for the children, nearly new toys and books, tombola and raffle. Refreshments will include hot snacks, delicious cakes and mulled wine.

As usual Father Christmas will be making a special appearance.

Christmas trees will be for sale (for collection on the evening of the Fayre only)

Almondsbury CE Primary School, Sundays Hill, Almondsbury BS32 4DS

01454 612517

www.almondsburyprimary.co.uk/

Octopus present their latest Pantomime - Snow White

Mirror, mirror on the wall, who's the fairest of them all? There's a wicked queen who is sure that she is most beautiful and, to make sure things stay that way, she has hatched an evil plan with the Woodcutter to do away with Snow White.

Will Prince Harry and Snow White's nanny be able to save our beautiful heroine? Will the seven dwarfs be able to keep her safe? Can three little pigs help out before a hungry wolf blows their houses down and eats everyone up? Oh, and does an apple a day really keep the doctor away?

Come along and find the answer to all these questions, with the usual mix of colourful characters, music and laughs at **Christ the King Church Hall, Castle Street, Thornbury from Wednesday 6th January to Friday 8th January at 7.30pm and Saturday 9th January at 11am and 2.30pm.**

The show is directed by Jon & Kelly Domaille and tickets are available from Monday 7th December at £6 for adults and £5 for concessions from RA Bennetts, The Plain, Thornbury and Karen Gill Tel 413783.

Alveston Gardens Association

On Monday 7th December 2015 Roger Umpelby will be looking at "Friends and Foes in the Garden".



Please come and join us at our meeting at 7.30pm in the Jubilee Hall, Alveston.

Visitors (£2) will be very welcome. Full programme on www.alveston.org.

Andy Day's Dinosaurs for Thornbury

CHILDREN'S TV favourite Andy Day will bring his enthusiasm for dinosaurs to Thornbury when he stages his energy-filled show at the town's arts festival.

Folk singer-songwriter Seth Lakeman and Dr Phil Hammond – NHS doctor, broadcaster, comedian and campaigner – have also been booked to appear during the ten-day event.

They form part of a packed programme being finalised by the 2016 festival team, which will be launched by comedy performer Tim Brooke-Taylor ahead of an on-stage chat about his career with Bristol writer and broadcaster Chris Serle.

Events featuring music, drama and film are in the schedule, as well as a guided walk in Frampton-on-Severn and a talk by BBC health correspondent Dominic Hughes.

Andy Day, best known for his work on the CBeebies channel, is set to be one of the big hits of the festival and three shows, with plenty of songs and dancing promised, will give as many youngsters as possible the chance to see the popular presenter.

He will appear during the same second weekend of the festival as the West Country's Seth Lakeman, who has successfully steered English folk into the mainstream with high-energy performances and a series of best-selling albums.

His Armstrong Hall audience will also get the chance to hear the home-grown Thornbury talent of singer-songwriter Emily Teague, who returns to her roots as support act.

Meanwhile, Phil Hammond makes a welcome return to the town after last appearing in the award-winning comedy double act Struck Off or Die in the 1990s.

Thornbury Swing Band and Bristol Male Voice Choir are among other performers, while the Bristol-based Ministry of Entertainment will stage one of its most popular theatre productions, Doodlebugs and Bogeymen, taking a light hearted look at the lives of two evacuees in the Second World War.

Artistic director, Shirley Sharp, said: "We've got a fantastic line-up of events already planned, with something for everyone to enjoy. We're especially pleased that Andy Day will be here as we wanted something special for children to see."

The festival runs from April 15-24, with details of events and ticket information available on the arts festival website www.thornburyartsfestival.com when the full programme has been drawn up.

Yours Faithfully

Fr. Lazarus Msimbe, Christ the King Church, Thornbury

The Power of Words

The power of words is sometimes hard to understand. An encouraging word can go such a long way, yet anyone can speak words that rob another of the spirit to continue in difficult times. The following story can give us a picture on how our words can be constructive or destructive:

A group of frogs was travelling through the woods when suddenly two of them fell into a deep pit. All the other frogs gathered around. When they saw how deep the pit was, they told the unfortunate frogs they would never get out. The two frogs ignored the comments and tried to jump up out of the pit. The other frogs kept telling them to stop, that they were as good as dead.

Finally one of the frogs took heed of what the other frogs were saying and simply gave up. He fell down and died. The other frog, however, continued to jump as hard as he could. Once again the crowd of frogs yelled at him to stop the pain and suffering and just die. However, to the surprise of everyone, he jumped even harder and finally did get out.

*One of the other frogs asked him, “**Why did you continue jumping? Didn’t you hear us?**” The group was shocked to discover that the frog was deaf, and all the time he had actually thought they were encouraging him to get out. He did not want to disappoint them and therefore did not give up.*

There are two lessons to the moral of the story above: First, that our words contain the power of life and death. An **encouraging word to someone who is down can lift him or her up** and help him or her make it through **difficult times**. Second, a destructive word to someone who is down can be what it takes to kill him or her. **Be careful of what you say; always speak life to those who cross your path.**

From the Registers St John the Evangelist Elberton

Oct 5th: Funeral Service and Burial of Emily Hucker.

Nov 1st: Baptism of Isabella Evelyn Meredith, daughter of James & Rosalind Meredith.

From the Registers St Mary's Olveston

November 15th: Baptism of Rosalie May daughter of Paul and Michelle Craig.

Church News

ST MARY THE VIRGIN, OLVESTON

Dec 6	8am	Holy Communion	Rev Philip Rowe
	10am	Toy Service -Tock. Manor Choir	Rev Roly Bain
	6pm	Evensong with Choir	Rev David Bone
Dec 13	8am	Holy Communion (BCP)	Rev Roly Bain
	10am	Morning Worship with Choir	J McBride & D Jones
	10am	Breakfast Club	Breakfast Club Team
	3.45	Back to Front	Paul Harrod
	6pm	Methodist Carol Service	
Dec 20	8am	Holy Communion	Rev David Bone
	10am	Holy Communion with Choir	Rev Philip Rowe
	3.45	Back to Front	Paul Harrod
	6pm	Carol Service with Choir	Rev Roly Bain
Dec 24	4pm	Christingle	Revs P Rowe & H Webb
	11.15	Holy Communion with Choir	Rev Roly Bain
Dec 25	8am	Holy Communion	Rev David Bone
	10am	Family Service	Rev Roly Bain
Dec 27	8am	Holy Communion	Rev Roly Bain
	10am	Feast of Fools	Rev Roly Bain
	6pm	Evensong (BCP) with Choir	Mrs McBride& Rev P Rowe

Information on services correct at time of going to press.

Rev Philip Rowe, 01454 613223; email: office@stmaryssevernside.org.uk

Rev Roly Bain for Baptisms, Marriages & Funerals 01454 616593.

Verger: **Mrs. June Robbins**, 01454 617491

www.stmarysolveston.org.uk/index.html

PRAYER GROUP: Mondays, 2.45pm in the Chancel

WEDNESDAY HOLY COMMUNION: At 9.00am led by the Rev. Roly Bain except 4th Wed when it is at Olveston Methodist Church

Morning Prayer 8.30am daily except Wed

CHAPELRY OF ST JOHN, AUST

Dec 13	5.30	Holy Communion.	Rev Ann Parker
Dec 20	5.30	Carol Service	Rev Ann Parker
Dec 24	11.30	Holy Communion	Rev Ann Parker

Focal Minister: **Rev Ann Parker**, 01454 632329

e-mail annatdibley@btinternet.com

Church Wardens: Jon Burnett 633835 & Jenn Dickens 632035

ST MARY DE MALMESBURY, LITTLETON-ON-SEVERN

Dec 6		No Service	
Dec 13	3pm	Carol Service followed by Mulled Cider & Mince Pies	Mrs Tracey Black
Dec 25		TBA	

www.alveston.org/alveston/sthelens-church-alveston

ST JOHN THE EVANGELIST, ELBERTON

Dec 15	8pm	Carol Service at Rock House	
Dec 25	9am	Holy Communion	Rev David Bone

www.alveston.org/alveston/sthelens-church-alveston

OLVESTON AND TOCKINGTON METHODIST CHURCH

Dec 6	10am	Tock. Ch.	Morning Worship - Mr Colin Saunders Advent Carols led by Mrs Rosalie Doyle Items by St Andrews Meth. Church Choir
	6pm	Tock. Ch.	
Dec 13	10am	Olv. Ch.	Morning Worship led by Mr Howard Wilson Carol Service led by Rev Pete Brazier
	6pm	Olv. Ch.	
Dec 20	10am	Tock. Ch.	Morning Worship with Holy Communion led by Rev Sandy Williams Village Carol Service
	6pm	St Mary's	
Dec 25	10.15	Tock. Ch.	Christmas Celebration Service led by Mrs Debs Brazier
Dec 27	10am	Olv. Ch.	Morning Worship led by Mrs Brenda Isherwood

CHRISTMAS SPECIALS (Please see fuller details on page 27)

NORTHWICK LUNCHEON GROUP: Christmas Lunch at 12.30pm on Wednesday 9th Dec. To book your lunch please ring 416528

TOCKINGTON LUNCHEON GROUP No meeting in Dec, Next meeting Jan 21st

COFFEE MORNINGS: Sats 10.30 - 12 noon in the Olv Meth Hall. (ex26th)

PRAYER MEETINGS Tuesdays 9.00-10.00 in Olv. Methodist Church.

HOUSE GROUP Thurs 17th Dec at 10.30am at 7 The Green Olveston

THE OLVESTON COMPUTER CLINIC Olveston Methodist Hall

Monday 2-4pm Wednesday 10-12 Friday 7-9pm

Ring 07833 354672 or 07957 433091 for further information.

CONTACT: Rev Pete Brazier Tel 01454 418176,

e-mail pete@thebigfishcafe.co.uk

THE VINE, AWKLEY

The Vine, Pilning Street, Awkley

We meet in a relaxed, informal manner for worship, prayer & conversational Bible studies incorporating Communion, on Sundays at 10.30am and Mondays and Wednesdays at 7.30pm We also visit other Churches and events so please check our Notice Board or contact .

Mike and Barbara Matthews, tel. 07512 917229 or email:
thevine_awkley@hotmail.com

THE OASIS CHURCH, OLD DOWN

Dec 6	6.30pm	Lyll Drewett
Dec 13	6.30pm	Alan Mann
Dec 20	6.30pm	Paul Ashford
Dec 25	10.30	Christmas Praise
Dec 27	6.30pm	Ceri Morgan- Davies

Each Thurs at 7.30pm Prayer & PraiseTime (ex. 24th)

For further information please contact **Ceri Morgan-Davies** 413043

Paul Ashford, 07774 110 814 or email: Paul@CalebGroup.net

AUST EVANGELICAL CHURCH

 Family Worship 11.00am

For more details contact Ann Roberts 632564.

e-mail ann.roberts@bylanes.co.uk

LITTLETON EVANGELICAL CHURCH

Evening Worship every Sunday at 6pm for details tel. 413247

RC CHURCH OF CHRIST THE KING, Thornbury

Sun 8.30am Mass 11.00 Family Mass

Monday-Friday Daily Mass at 10am

Tel 01454 412223 www.ctk-thornbury.org.uk

SOCIETY OF FRIENDS (QUAKERS), Thornbury

Meeting for Worship Sundays 10.30-11.30: The Hanover Room, The Chantry, Castle St. Wheelchair accessible. Children welcome with prior notice.

Local contact: Roger Howell at rogerhowell2@talktalk.net 01454 415035

National: www.quaker.org.uk Bristol area: www.bristolquakers.org.uk

Diary Dates for December 2015

The information given below is believed to be correct as we go to press.

1 st Tue	Tockington Toddlers Friends of Daldry Gardens Coffee Morning	9.30-11.30 10.30-12.00	WR DGCL
2 nd Wed	Computer Clinic every week Table Tennis O.P.H.S. 'Life on SS Great Britain'	10.00-12.00 7-8.30pm 7.30pm	MH PH OMC
3 rd Thu	Thornbury Farmer's Market (also 17th) Coffee Shop Olveston Toddlers Thornbury Late Night Shopping Thornbury & District Flower Club Demo	9.00-1.30 9.00-12.00 1.45-3.15 'til 8pm 7.30pm	OS† MH AH
4 th Fri	Thornbury Carer's Support group Almondsbury School Christmas Fayre Computer Clinic every week	1.00-3.00pm 6-8pm 7.00-9.00pm	Chy ASch MH
5 th Sat	Festive Coffee morning (see p 27) St.Peter's Hospice Christmas Bazaar Th. Christmas Food & Gift Fair Castle St Carols around Christmas Tree Thornbury Litter Pick Salvation Army Christmas Concert	10.00-1pm 10.00-12.00 10.00-2pm 10.00-12.00 1pm 7.30pm	MH TMH PH StM
6 th Sun	Bingo every Sun at Sports & Social Club	7pm	
7 th Mon	Computer Clinic every week Monday Movie Alv. Gardens Association	2.00-4.00pm 7.30pm 7.30pm	MH StM JH
8 th Tue	Tockington Toddlers Friends of Daldry Gardens Coffee Morning Memory Café W.I. American Supper RBL Women's Section Christmas Lunch	9.30-11.30 10.30-12.00 10.15-11.45 7.30pm	WR DGCL TMH PH
9 th Wed	Severn Vale Flower Club Christmas Lunch Table Tennis	12.00 7-8.30pm	AH PH
10 th Thu	Coffee Shop Olveston Toddlers S. Glos Ladies Lunch Club	9.00-12.00 1.45-3.15 12.15	OS† MH OSH
11 th Fri	Thornbury Picture House	7.30pm	CH
12 th Sat	Coffee Morning Coffee Morning Great Western Christmas Concert	10.30-12.00 10.30-12.00 7.30pm	AVH MH AH
13 th Sun	Festive Tea in aid of Caring at Christmas.	2.30pm	TCh

14 th Mon	Mobile Library Orchard Rise Mobile Library Daldry Gardens) Mobile Library Old P.O.- L-O-S	11.10-11.25 11.30-11.50 12.00-12.15	
15 th Tue	Tockington Toddlers Friends of Daldry Gardens Coffee Morning Alv. Singers Concert Messiah St Helen's Ch.	9.30-11.30 10.30-12.00 7.30pm	WR DGCL
16 th Wed	Holy Communion at Daldry Gardens Table Tennis Inner Wheel Carol Service Jazz at the White Hart Olveston	2pm 7.00-8.30pm 7pm 8.30pm	DGCL PH StM
17 th Thu	Coffee Shop	9.00-12.00	OS†
18 th Fri	Christmas Singalong at White Hart	9.00pm	
19 th Sat	Coffee Morning Alveston Singers Concert Messiah	10.30-12.00 7.30pm	MH StMT
21 st Mon	Children's Movie Club Monday Movie Extra	10.00 7.30pm	StM StM
22 nd Tue	Friends of Daldry Gardens Coffee Morning Carols & Nativity Tock Green/Chapel	10.30-12.00 6.30-8pm	DGCL
28 th Mon	Children's Movie Club	10.00	StM

Looking ahead to January

9th	Quiz	7.30pm	StM
-----	------	--------	-----

KEY: **AC** Aust Church; **AH** – Armstrong Hall; **AMC** – Alv. Methodist Church; **AMH**- Alv.Methodist Hall; **AP** – Alexandra Pavilion; **AVH** – Aust Village Hall; ; **CH** – Cossham Hall; **Chy** – Chantry ;**CS** Castle Sch. **DGCL** – Daldry Gardens Community Lounge; **EVH** – Elb.Village Hall;**JH** Jubilee Hall **LVH** Littleton Village Hall **MH** – Olv.Methodist Hall;**OMC** Olv Meth Ch **OS** – Olv School; **OS†** – Olv.Stores;**OSH** Alm.Old sch.Hall **OV** – Olv.Vicarage; **PH** – Olv. Parish Hall; **StM** St Mary's Ch.**OSH** Old Sch. Hall Alm, Olv.; **StMA** Alm Church **SMH** St Mary's Ch. Hall Thornbury **StMT**

St Marys Thornbury;**TCh** Tock.Chapel **TBCh** - Thornbury Baptist Church; **TMH** – Th. Meth Hall; ; **WR** – Wesley Rooms.

Contact details for any clubs or organisations in the Meeting Point area can be found in the Meeting Point Directory on the community website: www.olvestonandaust.com. If you would like to update your organisation's details, please email: meetingpointsecretary@olvestonandaust.com

Advertisements Neither Meeting Point, its editor, nor management committee accept any responsibility or give any guarantee in case of any dispute or claim as to quality, condition or delivery of commodities or services advertised in this magazine. It is not to be taken that publication implies recommendation. It is always advisable to check prices when ordering goods or services.

Views expressed by contributors are not necessarily those of the editor or Meeting Point magazine.

Copyright Meeting Point 2015. Copyright remains with the author(s) and Meeting Point. No part of this publication may be reproduced or transmitted in any form without the prior permission of the copyright owners.

Meeting Point is printed by **Bristol Business Centre**.