

Meeting Point

Volume 34, Number 5, February 2010

The community magazine for the villages of Olveston,
Tockington, Old Down, Lower Hazel, Awkley, Ingst, Aust, Elberton and Littleton upon
Severn

EDITOR:

Sharon Lapworth

4 Manor Park
Tockington
Bristol BS32 4NS
Tel: 01454 613502
**meetingpointeditor@
googlemail.com**

ASSISTANT EDITOR:

Angela Williams
Ashlea
Haw Lane
Olveston
Bristol BS35 4EG
Tel 01454 612850
**meetingpointmagazine@
googlemail.com**

ADVERTISING:

Nigel Dawes

Cromwell House
The Street,
Olveston
Bristol BS35 4DR
Tel: 01454 201558

Julie.dawes@tiscali.co.uk

Publication date

1st of each month

**Material for March 2010
to Editor or Deputy Editor by
8th February 2010**

From the Editor

Nobody can do everything,
but everyone can do something.
~Author Unknown

As I write, the snow and ice have melted and I hope that you were able to keep safe and warm over the Big Freeze or that you enjoyed the novelty that snow can bring either by sledging or the building of a snowman.

Meeting Point is a community magazine and it would be wonderful to receive articles from individuals as well as groups, if you wish to share something of interest.

Our cover this month is by Kate Hickman
Meeting Point Founded in 1976 by the Anglican and
Methodist churches in Olveston, near Bristol

**Meeting Point magazine and Meeting Point Directory is online on the
Community Website: www.olvestonandaust.com.**

PNG-where's that?

Ben Williams, who lived in Olveston and went to Olveston School & Marlwood, has left his teaching post in Warwick to spend 2 years working as a volunteer in Papua New Guinea. He sends us this report

'Welcome to PNG', read the sign behind the arrivals desk in Port Moresby, 'the land of the unexpected'. Having accepted a two year work placement in Papua New Guinea (PNG) with Voluntary Service Overseas, my only prior knowledge of the country had come from a Lonely Planet guidebook and friends' knowing references to cannibals and head-hunters. A few months later, I am beginning to realise how fortunate I am to be living in a country that is intriguing, diverse, complex, contradictory and much more besides.

The mainland of Papua New Guinea occupies the eastern half of the Pacific island of New Guinea and lies just south of the equator. Separated from the north-eastern tip of Australia by the Torres Strait, PNG is situated on the margin of the Pacific Ring of Fire, where tectonic processes are responsible for frequent seismic and volcanic activity. In 1998, a 10 metre tsunami wave killed more than 2,200 people near the town of Aitape in West Sepik. The island provinces of PNG include the semi-autonomous Bougainville, scene of a bloody civil war between separatist rebels and government forces in the 1990s. Climate varies from the heat and intense humidity of the islands and coastal lowlands to the cooler conditions in the highland belt, where the 'perpetual springtime' provides perfect all year growing conditions for a variety of European fruit and vegetables. Broadly speaking, seasons are either wet or dry, with the rainy season falling between December and March.

In a population of around 6 million, over 800 indigenous languages are spoken in PNG, more than any country in the world. There are three official languages: Hiri Motu, English and Tok Pisin (Melanesian Pidgin). Pidgin, which emerged as a trading language in the late eighteenth century, is the most commonly used *lingua franca* in the country. In recent years, pidgin has become creolised and is now spoken as a first language by about 100,000 people. In pidgin, sentence structures are reasonably simple and logical. For example, Prince Charles might be referred to as the 'nambawan pikinini bilong misis kwin', literally 'the number one child belonging to the Queen'.

A major part of traditional Melanesian society and PNG in particular, is the *wantok* system. Your *wantoks* are those people who speak the same local dialect - your kith and kin. This system is, at the same time, the country's biggest asset and its greatest failing. In the absence of social security benefits, *wantoks* provide a sense of belonging and a reliable safety net in

times of financial hardship. To some extent, poverty is alleviated by these traditional social values which assist those most in need. However, nepotism is widespread throughout public and political life, fuelling widespread corruption and misappropriation of government funds. Saying no to one of your fellow *wantoks* is rarely an option!

Organised religion plays an important part of life in PNG with most people identifying themselves as Christian. In general, Christianity coexists alongside the traditional beliefs in spirits and ancestral worship that are still prevalent amongst even the professional middle classes. Despite the importance of Christian values and beliefs, domestic violence is a significant problem in PNG. There are numerous reasons for this, although a major factor is the payment of bride prices by prospective husbands. Bride prices can be as high as 50,000 Kina (over £10,000) for a hard-working or educated woman, and the buyer will usually throw in a few dozen pigs - highly prized assets - in order to clinch the deal. This leads to the belief that a man is somehow entitled to beat his wife as she has been 'bought'; despite growing public awareness, domestic violence is part of married life for most women. Although most Melanesians are friendly and easygoing, fights can break out in the blink of an eye over a perceived slight or insult. The custom of payback or compensation is still widespread, as a colleague found out recently when he ran over a dog.

Visitors to PNG are often shocked by the poor dental hygiene of Papua New Guineans. This is due to the local custom of chewing betel nut, or *buai*. The nut is chewed with mustard stick and crushed lime, producing a mouthful of thick, red pulp which provides the chewer with a mild rush before being spat out. Almost everyone in PNG indulges in this highly addictive habit which is responsible for the high incidence of mouth cancer in the country, not to mention the horribly discoloured teeth and *buai*-stained pavements. The *buai* seller is a permanent fixture on almost every street corner and many of them earn more than skilled middle income earners.

There is no doubt that PNG fascinates and frustrates in equal measure, and this is certainly true of its education system. More on my work as an education volunteer next month.

Voluntary Service Overseas (VSO) is an international development agency which works through volunteers to fight poverty and disadvantage in developing countries. In 2008, VSO celebrated its 50th anniversary.

Thank You

The residents of Daldry Gardens would like to thank Adrian, Jo Baxter, Justin and daughters for all their help during the bad weather; clearing and salting paths, checking everyone was alright and if they needed shopping etc.

Parish Players

The Gondoliers Or The King of Barataria

The Gondoliers was premiered at The Savoy Theatre in December 1889 and has been a favourite Gilbert and Sullivan comic opera ever since. For many years all Productions had to conform to the original staging, actions and choreography, but in 1962 a copyright waver allowed for complete freedom of time and place. However the Parish Players Production is set in 1750, as written, with an exciting set design, by Andy Black, of Venice in its heyday, including gondolas, cleverly designed to accommodate some of the casts entrances and exits. The frills and furbelows of Eighteenth Century costume, organised by Gill Olewicz whom also plays Casilda, will make a great change from the spats of Oklahoma of last year. Jill Harris as choreographer has had the challenge of creating a Spanish Cachucha with castanets and graceful gavottes. Andy Black and Judy Jones are cast as the comedy duo, the Duke and Duchess of Plaza Toro, Mike Jones and Philip Savage portray the vibrant mandolin playing Gondoliers, Guiseppe and Maro, famous for taking 'A pair of sparkling eyes', whilst Lyn Shelley and Linda Chappell cast as Gianetta and Tessa explain all in 'when a merry maiden marries'. The fly in the ointment, the menacing Don Alhambra with resonances of the Spanish inquisition is played by Mike Speake, providing the essential dramatic tension. Mike Belsten as the romantic Luiz completes the principal cast.

As always Keith and Norma Richards are busy collating the unusual historic props. The music covers a range of styles from lilting ballads to Spanish cadenzas. With Chloe Allsop Jones as Musical Director and Linda Evans as Director, the whole Company are working towards giving audiences a musical treat from **March 2-6th at 7.30p.m in the Tockington Parish Hall. Tickets are available in the Olveston Methodist Hall on Tuesday February 2nd from 6-7pm. There after by phone from John and Judy Jones on 01454 613482.**

Dursley Male Voice Choir

On Feb 20th the choir are giving a concert in St Mary's Church in Almondsbury in aid of the Roof Appeal. Guest Soloist will be Kevin Robbins a top cornet player.

Tickets are available from Almondsbury Community Shop or by telephone 01454617646 or 01454613057. Tickets cost £8 in advance or £10 on the door. The concert will start at 7.30 pm.

New Services for Stroke Survivors and their carers

Last year South Gloucestershire Council received a grant from the Department of Health to develop and improve services within the area for Stroke survivors and their carers. A range of services received funding offering support and advice, counselling, education, communication support, return to work assistance, exercise and social opportunities for stroke survivors and their carers.

Projects which received funding were Bristol Area Stroke Foundation, Different Strokes, Exercise on Prescription, Thornbury Stroke Group, Employment Opportunities, Community Communication Support Groups and 'Life after Stroke' Carers course.

South Gloucestershire Council have also created the post of Stroke Care Co-ordinator who will assist Stroke survivors and their carers in accessing their community and promote future developments in 'Life after Stroke' services.

If you would like any information or advice about 'Life after Stroke' services please contact Tina Downing on 01454 862354 or email

Tina.Downing@southglos.gov.uk.

Your Local Radio Station

GlosS FM will be broadcasting from 19th April to 16th May, covering Olveston and the surrounding district. With the studio facilities successfully used for Thornbury FM's nine broadcasts, and with the aerial mast situated on higher ground, GlosS FM will be on air for four weeks twice each year, serving communities from Berkeley to Bradley Stoke. We need local representatives from every community, so if you can help as a link contact for your locality or be involved with advertising, promotion and publicity, management, finance, presenting or programme content we would be delighted to hear from you. For further details contact David Primrose, 01454 413209, or complete the Register of Interest form via the Get Involved tab on www.glossfm.org

Eastwood Gardeners' Club

Thornbury

Present an Evening with Mike Dilger, The trials and tribulations of a wild life photographer. Tuesday 23rd February at 7pm, in the Armstrong Hall, Thornbury. Tickets £7 from 01454 417649.



Patrol Camping Competition

23–25 October 2009

Late in October, 1st Olveston Scouts entered their 3rd County Camping Competition, and this one was probably their hardest to date. Teams of four to six Scouts, two nights under canvas, planning and cooking all their own food including a competition meal, all with no adult helpers and an army of inspectors constantly judging their scouting skills and teamwork. They were also challenged to make a Lunar Transport System, but worst of all they had to survive once their mobile phones had run out of batteries – the two days and two nights of wind and rain didn't compare to techno withdrawal ... Here's Edward Lovering's account, one of the brave chaps who took part.

There were five of us that went on Scout Camp, me, Greg, Will, Henry and Ed. When we got to Woodhouse we were given all the equipment and our own Leaders went home. We had to put up our tents all by ourselves. It was starting to get dark so we decided to make a fire. Two of us went off to get firewood. After 5 minutes they came back but not with firewood instead they had cardboard from the recycling bins. After a while we found a big wooden crate that we could use for firewood. The only problem was we had no way of chopping the crate up.

When we woke up on Saturday - at 7 o'clock! - we started to make breakfast but there was a problem – we couldn't find our bacon. The activities started at 10am and we did activities for the whole day. The activities were archery, the assault course, go-carting and much more. It was a really good day.

That night we had another fire but this time we had firewood. We didn't take an axe so we used our mallets to smash the crates.

On Sunday we had to be up by 7 o'clock! When we were cooking breakfast we found the lost bacon. We did a few activities then we had to take our tents down and put them in the trailer.

It is really good fun. I hope you go next year.
By Ed Lovering

Out of the 10 teams who entered the Tenderfoot Competition, Olveston came a fantastic 4th, only 45 points behind the winners, but better still they made new friends and achieved things they thought they never could.

Lynda Spratt SL 1st Olveston Scouts 01454 632484

**MEETING POINT
RECEIPTS AND PAYMENTS FOR THE YEAR ENDED 31st OCTOBER 2009**

RECEIPTS	2009	2008	PAYMENTS	2009	2008
	£	£		£	£
Balances at 31st October 2008 and 2007					
At Bank:			Printing and Collation	8542.50	7841.20
Current Account	2409.32	2483.16	Meeting Point Directory	-	420.00
Clubs & Charities A/C	5882.08	4760.24	Insurance	72.84	72.84
Advertisements	10357.50	10762.25	Postage	424.85	391.83
Interest	108.38	121.84	Stationery/Materials	97.65	94.02
			Computer Equipment	-	42.47
			Local Shops Voucher Scheme	133.50	-
			Donation to St Peters Hospice	-	50.00
			Meeting Point Website	105.75	815.00
			Hall Aid: Littleton Village Hall	400.00	-
			Aust Village Hall	400.00	-
			Tockington Wesley Rooms	400.00	-
			Olveston Parish Hall	400.00	-
			Elberton Village Rooms	400.00	-
			Gratuities	63.00	57.49
			Photocopying	-	11.24
			Corporation Tax	132.98	-
			Bookbinding	42.00	40.00
			Repairs to Community Seat	77.61	-
			At Bank:		
			Current Account	1074.14	2409.32
			Clubs and Charities A/C	5990.46	5882.08
				18757.28	18127.49

Documents relative to this Statement have been examined and found correct.

J S Howells F.C.A. *J. S. Howells* Dated *9/10/2009* Treasurer *T. W. Wall*

Thornbury U3A

One of the largest organisations in Thornbury, the University of the Third Age now has a membership of over 1500. Annual membership, due 1st January, costs £6.00 per person and £10.00 for two people at the same address. This entitles members to join as many of the numerous groups as they wish which offer a wide range of educational, social and leisure activities. The majority of these groups meet during the day, either in members' homes or halls in the local area. There are also a number of one-day visits and summer outings that are open to all U3A members.

The groups currently on offer are:

Archaeology	Architecture	Art Appreciation
Aspects of the Twentieth Century		Astronomy
Ballroom and Social Dancing		Basic Cycle Maintenance
Bird Watching	Book Group (2)	Bridge (3+)
Calligraphy	Chess	Church visits
Cinema	Classical Studies	Computing (+beginners)
Concert visits	Cooking for Husbands	Cooking for One
Country Dancing	Cycling	Discussions
Drawing	Family History	Financial Planning
French Beginners	French Conversation	Garden visits
Gentle Exercise	Geocaching	German
History (the Tudors)	History (the Stuarts)	Investment
Italian	Jazz Appreciation (2)	Latin
Line Dancing	Lip Reading	Lunch Clubs (1 Tuesday, 2 Wednesday)
Mah-jong	Mathematics	Music
Mythology and Astrological Psychology		
Navigation and Basic Map-reading		Opera and Opera visits
Our Living Language	Painting	Photography
Play-reading	Plodders	Poetry Appreciation
Recorders (3)	Science and Technology Forum	
Scrabble	Short Slow Rambles	Spanish
Spanish Conversation	Sustainable Future	Table Tennis (2)
Theatre visits	Travel and Tourism	Walking
Wine Appreciation (2)	World Religions	Writing for Pleasure

Further details and membership forms can be obtained from the Membership Secretary, Penny Withers on 01454 632315

The Mary & Joseph Road Show.

Dave Stone

St. Mary's Church Olveston, January 7th 8th and 9th

With music by Dr David Shaw (The Andrew Lloyd Webber of Olveston) and lyrics by his wife Sandy. The talented cast (ages ranging from 5 years old to 82 years young) performed a modern version of the Christmas Story.

What a Show!! From the Prologue to the finale, a wonderful mix of music and emotions. The clever staging of the birth of the baby Jesus, bringing spontaneous applause at each performance. A special mention must go to the Children's Song and Dance, led by Maedene Webb with Lottie Harries, Richard Sawyer, Hattie Stanley and 5 year old (going on 35) Emily Johnstone. They all performed with such confidence, with Emily amusing everyone with her stage presence. These are the future stars of village productions.

The Finale was the rousing Party scene with Party poppers and sweets being passed out to the Audience to get everyone in the mood. The Cast of 30 plus and Musicians Charles Patterson on guitar, John Groom on drums and David Shaw on piano brought the show to a rousing finish.

Under the Direction of Linda Evans, rehearsals have been held since last October and were great fun for all involved. Well done to all the principals - you were all excellent.

The hardworking energetic chorus - Brilliant. Thank you to the Production Team for all your efforts and a special thank you to Roly Bain for allowing his Camels to perform on Stage.

Last but not least, with all the freezing snow and ice during the three nights of the show, thank you to everyone who turned out to support every performance. It was great to hear the applause from young and old and the buzz around the church after such a great evening of local village entertainment. (The brain child of David and Sandy Shaw)

Thank You

The Men's Section of the Olveston Branch of the Royal British Legion would like to register their grateful thanks to Chris at the 'Crusty Loaf' Bakery, Olveston for his kind donation to cover the cost of the Piper in the Remembrance Parade in the village on Sunday 8th November 2009. Thank you for your outstanding support.

Ceilidh Evening

The Rotary Club of Thornbury is delighted to announce that they are holding a Ceilidh Evening featuring the Irish Band "Gypsy's Kiss" on **Saturday 27th February** in the Armstrong Hall. This will be a fun evening of Irish music, song and dance to suit all ages. No experience is needed because a caller will lead the dances. A meal is included in the ticket price. A table seating plan is available for group bookings. Bottles of wine are available for ordering on the night and there will be a full bar facility.

This event is in aid of the Rotary International worldwide campaign to eradicate polio from the entire world, so please come along to support this most worthy cause. It will be a wonderful evening.

Tickets cost £17.50, including supper and are available from the Town Hall in Thornbury High Street, Monday to Friday, 9.00am - 5.00pm or by post from Derek Baker 01454 619289 or email dereknigelbaker@btinternet.com

Time To Think About The Future?

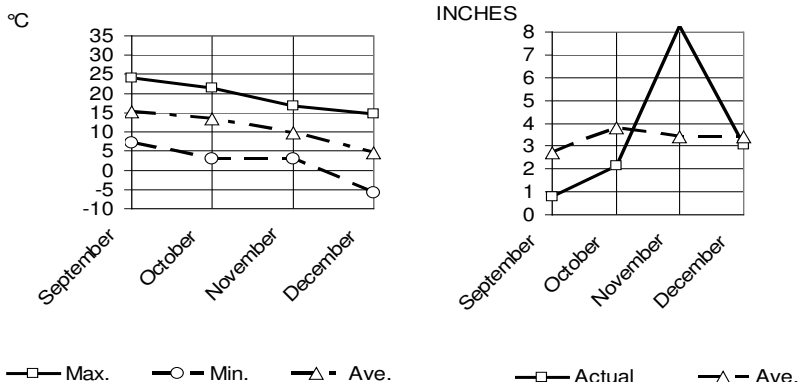
Remember 2008 when oil reached around \$140 per barrel? We all noticed the effects on the cost of fuel and energy bills. Although prices have gone down again now, mainly because of the recession, we are likely to see them rise again. The oil that we have is being used up and once it is gone, there will not be any more. Many scientists believe that we have already used up half of all the oil available in the world. Once world trade expands again, there will be a rush to use oil more quickly and this will put pressure on prices. If you think that this will not affect you, here are a few facts: we have allowed oil to become vital to virtually everything we do. Ninety-five per cent of all our food products require oil use. Ninety per cent of all our transportation, whether by land, air or sea, is fuelled by oil. Ninety-five per cent of all goods in shops involve the use of oil. Sustainable Thornbury invites everyone to come and find out the facts about Peak Oil. Ian Page, a local expert and member of The International Futures Forum, will be explaining the issue. We will have time to ask questions and to talk about what this means for us.

Come along to the Peak Oil event at **Olveston Parish Hall, 7.30pm on Tuesday 16th February**. Admission Free.



Weather Record

October to December 2009



October

A flow of subtropical air from the South caused the month to be characterised by continuing warm temperatures significantly higher than normal. Sunshine levels were also reasonably high and although we had some rain it was neither too heavy or prolonged. A very significant difference from October 2008 when we had some very cold weather brought about by Arctic winds.

Average temperature for the month was nearly one degree Celsius above normal but rainfall was approximately one and a half inches below norm.

November

Wet and windy characterised the month with an almost constant succession of low pressure systems passing over us bringing very significant heavy rainfall and gales. It was the wettest November since 2000. We had three dry days in the month and on the 26th we had just over an inch of rain. Gales occurred on ten days in the month.

Average temperature was approaching one degree Celsius above norm and rainfall was well over double the average for the month with average pressure being very low reflecting the constant passage of low pressure systems. For England and Wales this was the wettest month since November 1914.

December

The early part of the month was wet and windy with occasional Northerly winds bringing colder weather subsequently reverting to wet and windy conditions. This continued until the 17th when cold Northerly winds returned bringing low daytime temperatures and severe frosts at night. We had one and a half centimetres of snow on the 21st remaining until the 26th. Rain occurred on the last three days of the month.

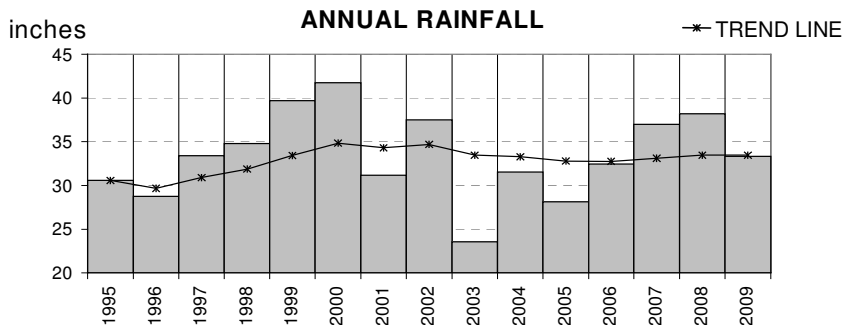
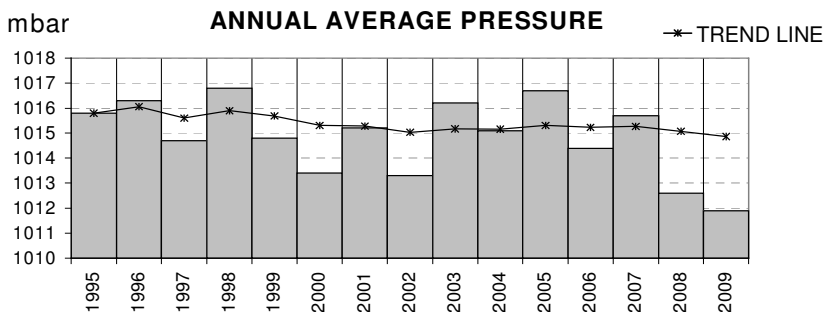
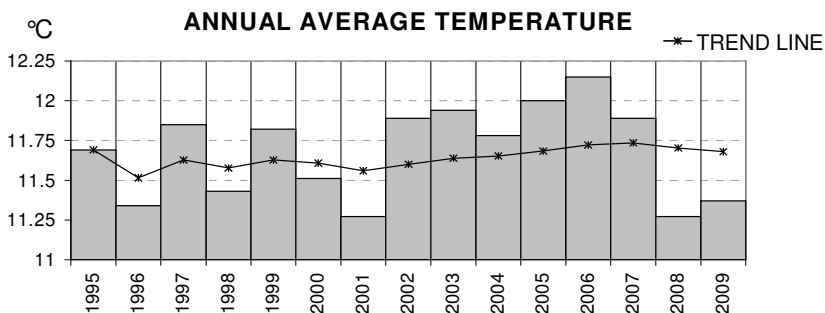
Rainfall for the month was marginally below average but atmospheric pressure and temperature were significantly below average.

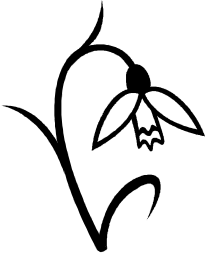


15 Year Weather Review 1995 to 2009

Marcus Bean

I leave the reader to draw their own conclusions from the bar charts below but would highlight low average pressure in 2000 and 2002 and very low in 2009. High average temperature of note occurred in 2006. Rainfall was high in 2000 and very low in 2003, but the trend continues fairly constant.





Walk with the Severnside Ramblers'

Your local Ramblers group has arranged a varied programme of walks for February. Non-members are very welcome.

We are a very friendly group.

For more information about walks in February pick up a programme at your local library, or log on to www.severnside-ramblers.org.uk.

A contact name and telephone number is given for each walk. We meet at Aldi car park, Bradley Stoke, BS32 9DA at the times shown below and share lifts to the start of the walk.

Sun 7 Feb 10.00am	Wintour's Leap, Chepstow Spectacular, varied walk for the sure footed!	6 miles	Heather 01454 632134
Sun 7 Feb 9.30am	Frome Valley An alternative, local walk	7 miles	Contact no 0785 5593773
Fri 12 Feb 9.30am	Portishead: New and Old This year's first fortnightly amble	2 ½ hours	Dave 01275 843547
Sat 13 Feb 9.00am	Clevedon Court and Tickenham Moor. Woodland, moorland and hill fort	8 miles	Dave 01275 843547
Sun 14 Feb	Valentine Walk Joint walk with Brunel Walking Group	TBA	See website
Sun 21 Feb 10.00am	Wye Valley and the Kymin Some hills, beautiful views	8 miles	Chris 01589 845423
Fri 26 Feb 10.00am	Durdham Down and Clifton -another fortnightly amble	2 hours	Chris 01454 618853
Sun 28 Feb 8.30am	Tintern An energetic walk with dramatic scenery	12 miles	Janet & Mike 01779650661

Stay Warm and Well This Winter

If your home is un-insulated, you could be losing as much as 75 per cent of the heat you pay for through walls, ceilings and draughts.

That's according to figures from the Centre for Sustainable Energy (CSE), who suggest that un-insulated homes can lose up to 35 per cent of heat through walls, 25 per cent through roofs and a further 15 per cent through draughts.

Yet for the vast majority of properties, measures to reduce these losses are easily available and often free to install –all South Gloucestershire residents can benefit from free and discounted loft and cavity wall insulation.

Gloucestershire Warm and Well is a major insulation project run on behalf of the Councils of Gloucestershire and South Gloucestershire to help residents to reduce fuel bills and ensure their homes will be warm this winter.

All private households in South Gloucestershire – including privately rented properties – will qualify for free loft and cavity wall insulation, if residents:

- **are over the age of 65**
- **OR are in receipt of certain benefits**
- **OR have a low income and low savings if aged over 60 or with children under 16**

Danielle Barrett, a Community Energy Advisor for CSE, said: “With temperatures plummeting and the wintry conditions showing no signs of letting up, insulation is the most effective way of cutting our fuel bills and keeping our homes warm and can save some people hundreds of pounds over the course of a year. Even if you do have insulation already, many people are not aware that they may need a top-up.”

To be referred to Warm and Well, or for further information on this and other grant schemes available in your area, please contact your local Energy Saving Trust advice centre on: **0800 512 012**.

St. Mary's Prayer Group

After 25 years the monthly evening Prayer for Healing services at St Mary's are being replaced. Now that we have the opportunity for Prayer for Healing on the first Sunday of the month at 10am, as well as the regular Monday Prayer Group, it seems time to move on. We are grateful for all those over the years who have come to lead our services and offer their wisdom and healing. The Prayer Group will continue to meet in church every Monday at 3pm

Keeping your pictures in order



Richard Churchill

After you have had a digital camera for a while, your computer can start filling up with a disorganised mass of pictures. Pictures of your birthday, summer holiday and your nephews wedding (who is still waiting for you to send him the pictures), it's a mess but there is a way out.

Picture managers are programs that help you organise your pictures and get the most out of them. One of the best is Google's Picassa, it is packed with easy to use features and is a free download from Google.

So what do they do? They start by helping you organise the way you store your existing pictures then keep them organised as you add more. Once organised you can view your pictures by the date they were taken, where they are stored, you can add descriptions to the pictures and then search to find the pictures you want easily.

When you have found what you are looking for you can group the pictures in an album, so you can find them again easily. You can do this without having to make a copy of the picture, so you have as many albums as you like without filling your computer with 20 copies of the same picture.

Once you have imported your picture or found an old picture you may want to edit it, to fix the little things that stop it being a great picture, photo editors connected to album software can be variable, both Google and Adobe do very good editors, others can be more limited and difficult to use.

Finally what good are pictures if the only place you can see them is on the computer? Your photo album software will arrange them so you can have 1, 2, 4 or 6 pictures to a page and as many copies of each picture as you like.

Picassa goes one better, you can create CD's with collections of pictures on, create video slide shows, or put your pictures on an electronic picture frame with just a few clicks of the mouse.

So go out, download or buy some picture management software and get organised.

If you would like some advice, have any ideas or questions, you can call 01454 616365 (ask for Richard) or email articles@yourpcguru.co.uk. Visit <http://yourpcguru.co.uk/articles/> for past articles and more information.

Good News

Bristol Credit Union Ltd *Frank Walters*

The **Bristol Credit Union** has recently extended its boundaries. Now those living or working in the old Avon area, including South Gloucestershire are eligible to become members (*a map is on the website*). The service provides a new way to save and borrow in our community and a way of helping others. A Credit Union is a mutual organisation with similarities to the old mutual building societies, operating on a **not-for-profit** basis for the benefit of its members.

Investment

Investing is safe as the Bristol Credit Union is authorised and regulated by the Financial Services Authority (FSA). They are part of the Financial Services Compensation Scheme, providing up to 100% protection for savings up to £50,000. An annual dividend is paid. The Credit Union only lends money that has been deposited with it. Therefore investment indirectly helps members of our community, and avoiding them from being driven towards unlicensed money lenders.

Savings

It is possible to save as little or as much as you want. Deposits can be made in a variety of ways. Children are able to save with Junior Accounts, through a **Child Trust Fund Account**, which is a safe home for CTF vouchers.

Services

Services include **Savings Accounts**, a **Christmas Savers Club**, **Bill Payments** and **Secure Internet Access** to accounts.

Borrowing

All members can apply for loans, including those on benefit, provided you have a regular income. Conditions and costs are better than with commercial banks.

Joining

There is an initial £2.50 Membership fee. You **do not** need to have a bank account or to be working to open an account.

Summary

Bristol Credit Union is safe, ethical and local

More information can be obtained from:

Tel: 0117-924-7309

Fax: 0117-989-2540

Email: info@bristolcreditunion.org.uk

Web: www.bristolcreditunion.org

Opening Times: Monday to Friday 10am – 2.30pm

Old Down Cricket Club

After England's men retained the Ashes in 2009 and with England ladies being so successful over the past year or so cricket continues to enjoy an increasing popularity. We at Old Down CC certainly hope that this popularity continues as we feel we offer excellent facilities for anyone interested in joining a cricket club or someone looking to take up the game.

Our ground The Park is owned by the cricket club and is located behind the Olveston Sports & Social Club (OSSC) and the Olveston United football pitch on the Alveston Road opposite the turning to Foxholes Lane at Old Down. Although rather biased, we feel that our ground is one of the most picturesque in the Bristol area with character as well as stunning views of the Severn Estuary. We benefit from having a set of covers, permanent nets as well as a bowling machine, which enhance our practice facilities. In addition we are lucky enough to benefit from the bar facilities offered by OSSC and most of our social activities centre on the social club and its facilities.

We run two Saturday sides in the Bristol & District League and are always looking to add to our squad. The cricket is competitive but we retain the traditional village element which other clubs seem to have dispensed with. We also run a Sunday X1 that plays friendly games where the emphasis is on enjoyment as much as being results driven. This year our build up to the season starts with indoor nets which we are holding at the Castle School starting on Monday 15th March 2010 from 8pm-9pm and any new players will be very welcome. For further information please contact 1st X1 Captain Mike Rowen 07887 953061 or 2nd X1 Captain Reg Rurchase 07778 701703.

As a club we also benefit from a Colts section which seems to get more successful each year. 2010 sees a change of direction for us in that we will be running an Under 9 side for the first time aimed at introducing boys and girls to cricket and to Old Down CC. In addition we will have two Under 15's sides and an Under 17's. Our Colts, including the Under 9's, commence their indoor winter practice at Bradley Stoke Community School on Saturday 6th March 2010 3pm-5.30pm. Any new players will be very welcome, particularly Under 9's, and for more information please contact our Colts Coaches Andy Kitchen 07713 316378 (U17's), Angus MacDonald 07818 016484 (U15's) or Reg Rurchase 07778 701703 (U9's)

As with any local club run by volunteers we are always keen to secure sponsorship. Whilst we appreciate that times are extremely hard for many local businesses we would be very grateful to hear from anyone interested in sponsoring the club in any way.

For further details on any of the above please contact Club Secretary Andy Rowen on 01454 418157 or at therowens@hotmail.co.uk or alternatively please visit our website www.olddowncricketclub.co.uk.

Old Down Cricket Club

150 Club Winners January

£50 Bill Finch

£15 Andy Rowen

£5 Greg Welsher

Latest £25 Bonus Ball Winners

12th December Barbara Binns

26th December Neil Cross

2nd January Reg Purchase

General Knowledge Quiz at Olveston Sports & Social Club
Friday 26th February 7.30. Everyone Welcome!!

Tony Gardner 07889 727729

St Peter's Hospice Sevenside Support Group



February – we will be delighted to welcome you to Thornbury Methodist Church Hall on **Thursday 11th February** at 7.30pm, when Ian McGuire the well known Owl conservationist and photographer will give an illustrated talk on owls. Ian is a specialist in his field and will enchant you with his talk. Admission £3.00 to include tea or coffee.

February 26th is our annual quiz at the Armstrong Hall – 7.00pm. For further details please telephone 412567.

March 4th– Sevenside Support Group will celebrate its 25th anniversary this year. This is the first of our special anniversary events and we hope you will be able to join with us. We are holding a celebration lunch at Thornbury Golf Club, when our guest speaker will be **THE RIGHT HONOURABLE ANN WIDDECOMBE MP**; tickets are priced at £20.00 to include a two course lunch and coffee. Lunch will be at 1.00pm. To reserve tickets please telephone 417543 or 415648.

Please support St Peter's – your local Hospice

Come and join us - we walk, we talk, we have fun!

Who are we?

We are South Gloucestershire Council's Walking to Health project, which has been running for 7 years and covers:

Kingswood

Yate

Filton, Patchway and the Stokes

Thornbury and many rural areas as well.

What do we offer?

We offer a range of free local walks for people of all ages! Walking to Health is a national scheme and is supported by a huge team of Volunteers (local residents) who help to lead the walks and motivate and support people to get fitter through walking.

You don't need to be an experienced walker, or even be able to walk very far - we offer walks of varying lengths to suit all abilities. So whether you're new to walking, are returning to it after an injury or illness, or walk regularly but fancy a change, why not come out and join us!

Volunteers Wanted

We are always looking for fun, friendly and sociable people to become Volunteers, which involves guiding the walkers around a pre-described route. (full training is provided). If you have some free time and think this could be something you would enjoy then please contact us.

Find out more!

For more info, or to receive a free copy of our walks programme:

Call **01454 868006**

Email foodandhealth@southglos.gov.uk.

Or visit our website www.southglos.gov.uk/walkingtohealth.

St. Mary's Appeal Update



Sitting snowbound and almost builder less, it seems at time of writing that we may not be finished in time for the Bishop's Dedication Service after all. We had already agreed to close down for the Sundays of Jan 17th & 24th to facilitate their work, so it won't be far off! We are grateful to Olveston Methodist Church for offering us their hospitality and premises for those two weeks - the services were as usual, just in a different place. We had already agreed to join them on the 24th for a service for the Week of Prayer for Christian Unity. Lots of people are coming on Jan 31st at 10am, including the congregations of Olveston and Tockington Methodist Church and St. Mary's Almondsbury, so come early for a decent seat!

Friends Of St. Mary's

The prize winners in this month's draw, held on 19th November 2009 at the Friends' Committee Meeting were:-

<u>Amount</u>	<u>Number</u>	<u>Name</u>
£150	508	Mr. P. Floyd, Old Down
£75	442	Mrs. J. Skinner, Olveston
£25	299	Mrs. J. Dickens, Olveston
£25	260	Mrs. P Kerrison, Olveston
£20	510	Mr. P. Floyd, Old Down
£20	451	Mrs. C. Black, Thornbury
£10	254	Mrs. S. Roos, Olveston

The prize winners in this month's draw, held on 9th December 2009 at the Friends' Committee Meeting were:-

<u>Amount</u>	<u>Number</u>	<u>Name</u>
£150	253	Mrs. A. Williams, Olveston
£75	401	Mr. L.R. Slaytor, Tockington
£25	356	Mr. D.J. Smart, Olveston
£25	152	Mr. A. Cogram, Olveston
£20	272	Mr. J.D. Donaldson, Alveston
£20	232	Mr. J.R. Moody, Olveston
£10	350	Mr. A. Waddicor, Fern Hill

Yours faithfully

To the many who will be sending cards, giving gifts and perhaps making a special effort, this is the month of love, or, perhaps more accurately, the Day of love! Valentine's Day is the second largest card-sending holiday of the year, Christmas obviously being the first.

Now it would take a foolish person who would dare to criticise any expression of love between people, or rob some of the delight in receiving some expression of love on at least one day a year, but as with many of our 'special' celebrations the underlying realities of life can be temporarily glossed over but that soon passes and the day to day reality can become unbearable.

Economic problems, health problems, social and relational problems, community problems, national problems, international problems etc.etc. Is there no end? Can there be no relieve?

One thing is certain, many problems will not go away. But what if there was someone to whom I could go who could really help. There is! One of my favourite portions of the Bible is from Matthew 11:28-30 "*Come to me, all you who are weary and burdened, and I will give you rest. Take my yoke upon you and learn from me, for I am gentle and humble in heart, and you will find rest for your souls. For my yoke is easy and my burden is light.*" The words of Jesus, (you know the one whose birth many remembered a few weeks ago) who now in his thirties was preparing to make a declaration of love that has lasted nearly two thousand years.

To those of you who may have internet access why not read a 'love letter' from God the Father by following this link:
<http://www.fathersloveletter.com/text.html>

To those who can't, remember God loved you so much that he gave his one and only Son, that whoever believes in him shall not perish but have eternal life. [John 3:16]. Learn to enjoy His love daily.

Michael Matthews, The Vine, Pilning Street, Awkley

Email: thevine_awkley@hotmail.com

Tel: 07512917229

From the registers at St. Mary's

Baptism on 27th December 2009 of Evie Charlotte Taylor daughter of Kevin and Lucy Taylor

Burial of ashes at St. Mary's on 11th December 2009 of Evelyn May Brain

Church News

ST MARY THE VIRGIN, OLVESTON

Feb 7	8am	Holy Communion	Rev Philip Rowe
	10am	Holy Communion	Rev Philip Rowe
	10am	Breakfast Club	Breakfast Club Team
	6pm	Evensong with Choir	Mr D Jones & Mrs A Lloyd
Feb 14	8am	Holy Communion (BCP)	Canon David Sansum
	10am	Morning Worship with Choir	Mrs J McBride & Mrs A Lloyd
	10am	Breakfast Club	Breakfast Club Team
	6pm	Evensong	Rev Philip Rowe
Feb 17	9am	Holy Communion (Ash Wed.)	Rev Roly Bain
	7.30	Holy Communion at St Helen's Alveston	
Feb 21	8am	Holy Communion	Rev Philip Rowe
	10am	Holy Communion with Choir	Rev Philip Rowe
	10am	Breakfast Club	Breakfast Club Team
	6pm	Evensong	Rev David Bone
Feb 28	8am	Holy Communion (BCP)	Canon David Sansum
	10am	Pet Service	Rev Roly Bain & Rev Helen. Webb
	6pm	Evensong (BCP) with Choir	Rev Philip Rowe

Information on services correct at time of going to press.

Contact:

The Rev Philip Rowe, 01454 613223; email: office@stmaryssevernside.org

Please contact Philip about Baptisms, marriages, funerals or other matters at any time, but please try to avoid Thursdays except in an emergency.

Verger: Mrs. June Robbins, 01454 617491

www.stmarysolveston.org.uk/index.html

PRAYER GROUP: Mondays, 3.00pm in the Church

WEDNESDAY HOLY COMMUNION: At 9.00am led by the Rev. Roly Bain

CHAPELRY OF ST JOHN, AUST

Feb 7	10am	Family Worship	Rev David Bone
Feb 14	10am	Holy Communion	Rev David Bone
Feb 21	8am	Holy Communion	Rev David Bone
Feb 28	10am	Morning Prayer	Rev David Bone

Hon. Curate: Rev David Bone 614601

Church Wardens: Jo Jenkins 632838 and Janet Ford 633300

ST MARY DE MALMESBURY, LITTLETON-ON-SEVERN

Feb 7	9am	Holy Communion	Rev David Pole
Feb 21	9am	Matins	Mr Don Streatfield

Contact: Rev. David Pole 414810; www.sthelensalveston.org

ST JOHN THE EVANGELIST, ELBERTON

Feb 14	9am	Matins	Mr Don Streatfield
Feb 28	9am	Holy Communion	Rev David Pole

Contact: Rev. David Pole 414810; www.sthelensalveston.org

OLVESTON AND TOCKINGTON METHODIST CHURCH

Feb 7	10am	Tock. Ch.	Home Missions Anniversary Service led by Rev. Denise Harding
	6pm	Olv. Ch.	Evening Worship led by Mrs Rosalie Doyle
Feb 14	10am	Olv. Ch.	All Age Worship led by Rev Sandy Williams. The Breakfast Club will join us later.
	6pm	Tock Ch.	Evening Worship led by Rev Sandy Williams
Feb 21	10am	Tock. Ch.	Morning Worship with Holy Communion led by Rev. Sandy Williams.
	4pm	Daldry Gdns	Worship led by Mr Glyn Varney
Feb 28	10am	Tock Ch.	Morning Worship led by Mr John Hopper
	6pm	Olv Ch	Evening Worship with Holy Communion led by Rev Sandy Williams

LIGHT LUNCHES: Thursday 4th Feb at 12.15 in the Tockington Wesley Rooms. To book your lunch please ring 612112 or 613241.

NORTHWICK LUNCHEON GROUP: This meets at 12.30pm on Wednesday 10th Feb. To book your lunch please ring 416528

PRAYER MEETINGS: Thursdays at 2.15pm in the Olveston Vestry.

COFFEE MORNINGS: Sats 10.30 - 12 noon in the Olveston Methodist Hall.

CONTACT: Rev Sandy Williams Tel 07841 752 941

Sandy.williams48@btinternet.com

THE VINE, AWKLEY

The Vine, Pilning Street, Awkley

We meet in a relaxed, informal manner for worship, prayer and conversational Bible studies and incorporating Communion, normally on Sundays at 10.30am and Mondays and Wednesdays at 7.30pm. We also visit other churches and events, so please check our Notice Board or contact us. Prayer requests can be posted through the letter box at The Vine or sent to us by post or email. Please add a name or initial to identify your request.

Mike and Barbara Matthews, tel. 07840 793772 or email:

thevine_awkley@hotmail.com

THE OASIS CHURCH, OLDDOWN

Feb 7	6.30pm	Martin Taylor
Feb 14	6.30pm	Roger Greenslade
Feb 21	6.30pm	Rev Neil Mobbs
Feb 28	6.30pm	Rev Jim Dick

Prayer Time every Thurs 8pm.

For further information please contact **Olwen Wonnacott**, 412141 or **Paul Ashford**, 07774 110814 or email: Paul@CalebGroup.net

AUST EVANGELICAL CHURCH

Family Worship 11am Evening Worship 6.30pm Phone 632564 for more details

BRISTOL CHRISTIAN FELLOWSHIP - Our Sunday morning meetings are held at The Grange School in Warmley at 11 am.

Contact 01454 613305 www.bcfnet.com

RC CHURCH OF CHRIST THE KING, Thornbury - each Sunday

8.30am Mass 11.00 Family Mass 6.30pm Mass

SOCIETY OF FRIENDS (QUAKERS), Thornbury

Meeting for Worship Sundays 10.30-11.30: The Hanover Room, The Chantry, Castle St. Wheelchair accessible. Children welcome with prior notice. **Local contact: Elizabeth Sidwell**, 412975

National: www.quaker.org.uk Bristol area: www.bristolquakers.org.uk

Diary Dates for February 2010

The information given below is believed to be correct as we go to press.

1 st Mon	Severn Vale Flower Club-Practice	1.30	AH
2 nd Tue	Tockington Toddlers Royal British Legion -Women	10.00-12.00 7.30pm	WR DGCL
3 rd Wed	Olv. Par. Hist. Soc -The Purton Hulks	7.30pm	MH
4 th Thu	Coffee Shop Olveston Baby & Toddler Group	10.00-12.00 2.00-4.30	OS+ MH
5 th Fri	Royal British Legion -Women	7.30pm	DGCL
6 th Sat	Coffee Morning	10.30-12.00	MH
8 th Mon			
9 th Tue	Tockington Toddlers Women's Institute	10.00-12.00 7.30pm	WR PH
10 th Wed	Severn Vale Flower Club -AGM Lunch & Demo "The Little Green Orchard" Royal British Legion - Men	10.30am 7.30pm	AH DGCL
11 th Thu	Coffee Shop' Olveston Baby & Toddler Group	10.00-12.00 2.00-4.30	OS+ MH
12 th Fri			
13 th Sat	Coffee Morning	10.30-12.00	MH
15 th Mon			
16 th Tue	Tockington Toddlers Pancakes & P-P-P-Penguins-Phil Savage	10.00-12.00 7.30pm	WR St M
17 th Wed	Severnvale Smallholders Assn-Pest Control	7.30pm	Chy
18 th Thu	Coffee Shop Olveston Baby & Toddler Group	10.00-12.00 2.00-4.30	OS+ MH
19 th Fri			
20 th Sat	Coffee Morning Dursley Male Voice Choir'	10.30-12.00 7.30pm	MH StMA
21 st Sun			
22 nd Mon			
23 rd Tue	Tockington Toddlers Olveston Parish Council	10.00-12.00 7.30pm	WR AP
24 th Wed	Alveston History Society-Archaeology in S Glos-recent finds	7.30pm	AMC
25 th Thu	Coffee Shop Olveston Baby & Toddler Group	10.00-12.00 2 00-4.30	OS+ MH

	Thornbury & District Flower Club-AGM	7.30pm	TMH
27 th Sat	Coffee Morning	10.30-12.00	MH
28 th Sun	Marlwood School Car Boot Sale	9.30am	

Looking ahead to March

5 th Fri	Women's World Day of Prayer	10.15am	OMC
13 th Sat	100 yrs of Aviation	10.00-4.00pm	PH
26 th Fri	OPTA Wine Challenge Tickets tel 619833	7.30pm	PH
2 nd -6 th	Parish Players--Gondoliers	7.30pm	PH

KEY: **AC** Aust Church; **ACR** – Almondsbury Church Rooms; **AH** – Armstrong Hall; **AMC** – Alveston Methodist Church; **AMH**- Alveston Methodist Hall; **AP** – Alexandra Pavilion; **AVH** – Aust Village Hall; **CCCP** – Castle Court Car Park; **CH** – Cossham Hall; **Chy** – Chantry; **DGCL** – Daldry Gardens Community Lounge; **EVH** – Elberton Village Hall; **MH** – Olveston Methodist Hall; **OMC**-Olveston Methodist Church; **OS** – Olveston School; **OSt** – Olveston Stores; **OV** – Olveston Vicarage; **PH** – Olveston Parish Hall; **StM** – St Mary's Church, Oliv.; **StMA** Almondsbury Church; **TBCh** - Thornbury Baptist Church; **TMH** – Thorn. Methodist Hall; **URC** - Thornbury United Reform Church; **WR** – Wesley Rooms.

Contact details for any clubs or organisations in the Meeting Point area can be found in the Meeting Point Directory on the community website: www.olvostonandaust.com. If you would like to update your organisation's details, please email: meetingpointsecretary@olvostonandaust.com

Advertisements Neither Meeting Point, its editor, nor management committee accept any responsibility or give any guarantee in case of any dispute or claim as to quality, condition or delivery of commodities or services advertised in this magazine. It is not to be taken that publication implies recommendation. It is always advisable to check prices when ordering goods or services.

Views expressed by contributors are not necessarily those of the editor or Meeting Point magazine.

Copyright Meeting Point 2009. Copyright remains with the author(s) and Meeting Point. No part of this publication may be reproduced or transmitted in any form without the prior permission of the copyright owners.

Meeting Point is printed by Bristol Business Centre.